



WELDING ANCILLARY PRODUCTS



+90 444 9353
magmaweld.com
info@magmaweld.com

 +90 538 927 12 62

WE MANUFACTURE WELDING CONSUMABLES & EQUIPMENT

Magmaweld is a manufacturer of Stick Electrodes, MIG/MAG & TIG Wires, Flux Cored Wires, Submerged-Arc Wires and Fluxes, Welding Machines, Welding Ancillary Products and Automation Systems in Turkey. Oerlikon Kaynak Elektrodları ve Sanayi A.Ş. was founded in 1957 in order to manufacture stick electrodes as a licensee of Oerlikon-Buehrle AG.



Welding Consumables Factory
Organize Sanayi Bölgesi 2. Kısım, Manisa / TURKEY



Welding Machines and Automation Factory
Organize Sanayi Bölgesi 5. Kısım, Manisa / TURKEY

In the year 2000, in order to reduce costs, to strengthen the leading position in Turkey and turn Magmaweld into a global brand, two old factories in Istanbul were moved to new, state of the art factory in Manisa, situated in the west of Turkey. In 2010 the second factory has been opened also in Manisa to produce high-tech welding equipment as well as to integrate robotic automation systems.

The MAGMAWELD brand came out as an analogy between the molten core of the earth, the MAGMA and the WELDPPOOL.

Magmaweld greatly values technical education and has been contributing to the training and education of thousands of welders through regular, free of charge courses since 1961. This service helps to increase consumer awareness and technical competence throughout the industry.

Magmaweld strives for customer satisfaction and process excellence. In order to satisfy customer needs, all questions and remarks about products, training, welding technologies, welding procedures, standards, work safety and automation are processed through the call center at +90 444WELD (4449353) or through live support from www.magmaweld.com where the relevant information is directed to Magmaweld's experts.

INDEX

WELDING FUME EXTRACTION AND FILTRATION SYSTEMS

Mobile Models	1
Fixed Models	3
Mobile Fan Systems	5

WORKSHOP EQUIPMENTS

Welding Tables	6
----------------	---

ELECTRODE AND WELDING FLUX DRYING OVENS

Electrode Drying Ovens	7
Welding Flux Drying Ovens	11

ABRASIVE PRODUCTS

Cut Off Discs	13
Grinding Discs	14
Flap Discs	14

CERAMIC BACKINGS

15

CARBON CUTTING AND GOUGING ELECTRODES

16

TORCHES

MIG / MAG Torches and Accessories	17
TIG Torches and Accessories	18

HEALTH AND SAFETY PRODUCTS

Welding Masks	19
---------------	----

WELDING CHEMICALS

Welding Spray	20
Protective Welding Paste	20
Anti Spatter	20
Coolant	21
Inox Paste	21

WELDING FUME EXTRACTION AND FILTRATION SYSTEMS

Mobile Models

DFS 1M, DFS 2M

DFS 1MK, DFS 2MK



One Arm Model
DFS-1M

Two Arm Model
DFS-2M

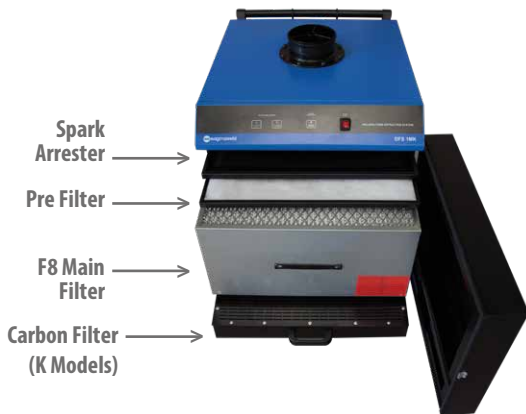
- 99% efficient cleaning of welding fume with F8 Filter
- Aluminum mesh for spark damping
- Warning lamp for filter change
- Reversed phase control lamp
- 5 m supply cable
- Optional 2 m, 3 m and 4 m moving acrobat arm selection with a diameter of 150 mm
- Optional lighting
- Carbon Filter for advanced applications (for MK models)



- Acrobat Arm Length Options:

2 m - 3 m - 4 m

WELDING FUME EXTRACTION AND FILTRATION SYSTEMS



DFS-1M

DFS-2M

DFS-1MK

DFS-2MK

	DFS-1M	DFS-2M
	DFS-1MK	DFS-2MK
Mains Voltage	380 V - 50 / 60 Hz	380 V - 50 / 60 Hz
Filtering Efficiency	> 99%	> 99%
Motor Power	1,1 kW / 1,5 kW (K model)	1,5 kW
Suction Capacity	3000 m ³ / h	2800 m ³ / h
Suction Capacity (For K Models)	2800 m ³ / h	2600 m ³ / h
Noise Level	72 dB (A)	72 dB (A)
Dimensions (l x w x h)	650 x 750 x 1050 mm	650 x 750 x 1050 mm
Dimensions (for K Models) (l x w x h)	650 x 750 x 1200 mm	650 x 750 x 1200 mm
Weight	96 kg	108 kg
Weight (for K Models)	115 kg	115 kg
Product Code	8415100M15	8415200M15
Product Code (For K Models)	8415110M15	8415210M15

Consumables and Optional Accessories

Carbon Filter (For K Models)	8490000200	8490000200
Main Filter	8490000603	8490000603
Pre Filter	8490000301	8490000301
Lighting (Optional)	8490000305	8490000305
Acrobat Arm 2 m	8420000102	-
Acrobat Arm 3 m	8420000103	-
Acrobat Arm 4 m	8420000104	-
Flap Acrobat Arm 2 m	-	8420000202
Flap Acrobat Arm 3 m	-	8420000203
Flap Acrobat Arm 4 m	-	8420000204

* Main unit and movable arm are ordered separately for Mobile and Fixed DFS products.
Optional handle should be selected according to the base unit from the above table and be added to the order



EN 60335

WELDING FUME EXTRACTION AND FILTRATION SYSTEMS

Fixed Models

DFS-1S, DFS-2S

DFS-1SK, DFS-2SK



One Arm Model
DFS-1S

Two Arm Model
DFS-2S

- 99% efficient cleaning of welding fume with F8 Filter
- Aluminum mesh for spark damping
- Warning light for filter change
- Reversed phase control lamp
- 5 m supply cable
- Optional 2 m, 3 m and 4 m moving acrobat arm selection with a diameter of 150 mm
- Optional lighting
- Carbon Filter for advanced applications (for SK models)



- Acrobat Arm
Length Options:
2 m - 3 m - 4 m

WELDING FUME EXTRACTION AND FILTRATION SYSTEMS



	DFS-1S	DFS-2S
	DFS-1SK	DFS-2SK
Mains Voltage	380 V - 50 / 60 Hz	380 V - 50 / 60 Hz
Filtering Efficiency	> 99%	> 99%
Motor Power	1,1 kW / 1,5 kW (K Model)	1,5 kW
Suction Capacity	3000 m ³ / h	2800 m ³ / h
Suction Capacity (For K Models)	2800 m ³ / h	2600 m ³ / h
Noise Level	72 dB (A)	72 dB (A)
Dimensions (l x w x h)	655 x 755 x 935 mm	655 x 755 x 935 mm
Dimensions (for K Models) (l x w x h)	655 x 755 x 1085 mm	655 x 755 x 1085 mm
Weight	90 kg	90 kg
Weight (for K Models)	110 kg	110 kg
Product Code	8416100M15	8416200M15
Product Code (For K Models)	8416110M15	8416210M15

Consumables and Optional Accessories		
Carbon Filter (For K Models)	8490000200	8490000200
Main Filter	8490000603	8490000603
Pre Filter	8490000301	8490000301
Lighting (Optional)	8490000305	8490000305
Acrobat Arm 2 m	8420000302	-
Acrobat Arm 3 m	8420000303	-
Acrobat Arm 4 m	8420000304	-
Fixed Flap Acrobat Arm 2 m	-	8420000402
Fixed Flap Acrobat Arm 3 m	-	8420000403
Fixed Flap Acrobat Arm 4 m	-	8420000404

* Main unit and movable arm are ordered separately for Mobile and Fixed DFS products.
Optional handle should be selected according to the base unit from the above table and be added to the order.

WELDING FUME EXTRACTION AND FILTRATION SYSTEMS

Mobile Fan Systems

DES-MS

- Ability to be used in any kind of welding and cutting application
- Excellent suction performance in narrow and closed environments
- Thanks to the 5 meter magnet suction nozzle offered as a standard, can be fixed in different application positions
- Optional hose suction distance adjustable between 5 m and max. 20 m



DES-SS

- Ability to be used in any kind of welding and cutting application
- No-filter smoke suction system designed for applications with fixed welding lines
- Optional 2 m, 3 m and 4 m moving acrobat handle selection with a diameter of 150 mm
- Optional lighting



	DES-MS	DES-SS
Mains Voltage	380 V - 50 / 60 Hz	380 V - 50 / 60 Hz
Motor Power	1,1 kW	1,1 kW / 1,5 kW
Suction Capacity	3000 m ³ / h	3000 m ³ / h
Noise Level	69 dB (A)	69 dB (A)
Dimensions (l x w x h)	650 x 500 x 250 mm	650 x 500 x 250 mm
Weight	40 kg	37 kg
Product Code	8414011M15	8417000M15 / 8417015M15

Optional Accessories

Acrobat Arm (Spiral Flap) 2 m	-	8420000502
Acrobat Arm (Spiral Flap) 3m	-	8420000503
Acrobat Arm (Spiral Flap) 4 m	-	8420000504
Flex Hose 5m	8420001106	-
Flex Hose (Magnet) 5 m	8420001105	-
Flex Hose 10 m	8420001110	-
Flex Hose 15 m	8420001115	-

* Flex Hose (Magnet) 5 m Optional arm is sold separately in Mobile Spiral Units (DES-MS) and should be added to the order.



EN 60335

Welding Table with Cover



- Modular protective panels that refract light during welding
- Wheel structure and locking wheels for easy movement capability
- Folding feature for functional use
- Ideal for welding and grinding applications

Technical Specifications

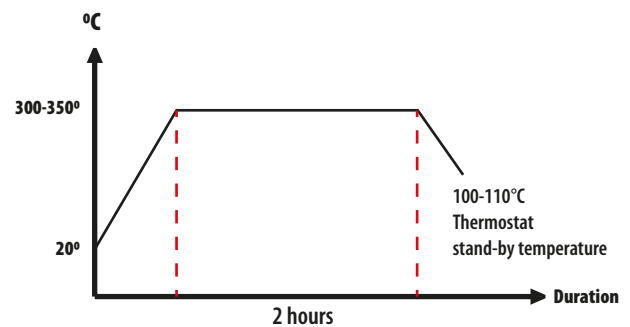
Dimensions (l x w x h) Poids	1480 x 800 x 550 mm
Weigh	50 kg
Product Code	8300000500

ELECTRODE AND WELDING FLUX DRYING OVENS



Electrode covers tend to be more or less humidified based on their types. During transport and storage, the electrode cover gets humid from the air. Despite the plastic packaging, the amount of humidity on the cover increases during storage depending on the temperature and relative humidity in the environment. Electrodes should be stored under suitable conditions and dried before use if necessary according to the information stated on the labels. As Magmaweld, we offer various types and sizes of drying ovens for your use.

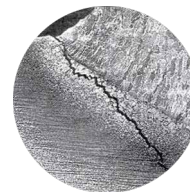
Covered electrodes and welding fluxes should be dried at the manufacturer's recommended temperature and period to prevent some defects during the welding process in case of humidification.



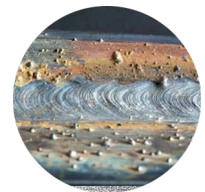
- The most common errors encountered are as follows if no drying is applied on humid electrodes in arc welding (rutile, basic, stainless steel):
 - a) Porosity formation,
 - b) Hydrogen cracks (cold cracks),
 - c) Spatter



a



b

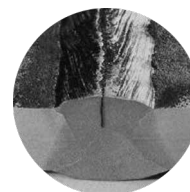


c

- The most common errors encountered are as follows if no drying is applied on humid fluxes in submerged arc welding:
 - d) Porosity formation in the seam and/or slag,
 - e) Hydrogen cracks



d



e

ELECTRODE AND WELDING FLUX DRYING OVENS

Electrode Drying Ovens



Technical Specifications	MKF-M
Capacity	3,75 kg - 75 pcs. of Rod Electrodes
Outer Diameter	11 cm
Height	50 cm
Weight	2.5 kg
Product Code	8320100003

Technical Specifications	MKF-TE
Capacity	5 kg - 100 pcs. of Rod Electrodes
Outer Diameter	16 cm
Max. Heating Degree	0 - 130 °C
Operating Power	200 Watt
Operating Voltage	220 - 240 Volt
Height	50 cm (56 cm with the holder)
Weight	5 kg
Input Current	1 A
Product Code	8320100011



Technical Specifications	MKF-1YE
Capacity	5 kg - 100 pcs. of Rod Electrodes
Outer Diameter	16 cm
Max. Heating Degree	60 - 200 °C
Operating Power	200 Watt
Operating Voltage	220 - 240 Volt
Height	60 cm (65 cm with the holder)
Weight	6,5 kg
Input Current	1 A
Product Code	8320100001

ELECTRODE AND WELDING FLUX DRYING OVENS

Electrode Drying Ovens

Technical Specifications	MKF-2YE
Capacity	10 kg - 200 pcs. of Rod Electrodes
Outer Diameter	22 cm
Max. Heating Degree	60 - 200 °C
Operating Power	400 Watt
Operating Voltage	220 - 240 Volt
Height	60 cm (65 cm with the holder)
Weight	8 kg
Input Current	2 A
Product Code	8320100002



Technical Specifications	MKF-4YE
Capacity	20 kg - 400 pcs. of Rod Electrodes
Outer Diameter	27 cm
Max. Heating Degree	50 - 300 °C
Operating Power	600 Watt
Operating Voltage	220 - 240 Volt
Height	50 cm
Weight	13 kg
Input Current	3 A
Product Code	8320100004

Technical Specifications	MKF-1KE
Capacity	5 kg - 100 pcs. of Rod Electrodes
Max. Heating Degree	60 - 200 °C
Operating Power	400 Watt
Operating Voltage	220 - 240 Volt
Height	66 cm
Width	21 cm
Length	21 cm
Weight	10 kg
Input Current	2 A
Product Code	83201000K1



ELECTRODE AND WELDING FLUX DRYING OVENS

Electrode Drying Ovens

Technical Specifications	MKF-2KE
Capacity	10 kg - 200 pcs. of Rod Electrodes
Max. Heating Degree	60 - 200 °C
Operating Power	600 Watt
Operating Voltage	220 - 240 Volt
Height	68 cm
Width	31 cm
Length	51 cm
Weight	24 kg
Input Current	2 A
Product Code	83201000K2



Technical Specifications	MKF-4KE
Capacity	20 kg - 400 pcs. of Rod Electrodes
Max. Heating Degree	60 - 300 °C
Operating Power	800 Watt
Operating Voltage	220 - 240 Volt
Height	68 cm
Width	36 cm
Length	55 cm
Weight	30 kg
Input Current	4 A
Product Code	83201000K5

Technical Specifications	MKF-10KE
Capacity	50 kg - 1000 pcs. of Rod Electrodes
Max. Heating Degree	0 - 400 °C
Operating Power	3000 Watt
Operating Voltage	380 - 400 Volt
Height	70 cm (102 cm with the electrical panel)
Width	53 cm
Length	67 cm
Weight	80 kg
Input Current	14 A
Product Code	8320100010



ELECTRODE AND WELDING FLUX DRYING OVENS

Electrode Drying Ovens

Technical Specifications	MKF-20KE
Capacity	100 kg - 2000 pcs. of Rod Electrodes
Max. Heating Degree	0 - 400 °C
Operating Power	4500 Watt
Operating Voltage	380 - 400 Volt
Height	102 cm (134 cm with the electrical panel)
Width	46 cm
Length	67 cm
Weight	105 kg
Input Current	21 A
Product Code	8320100020



Technical Specifications	MKF-50KE
Capacity	250 kg - 5000 pcs. of Rod Electrodes
Max. Heating Degree	0 - 400 °C
Operating Power	4500 Watt
Operating Voltage	380 - 400 Volt
Height	115 cm (150 cm with the electrical panel)
Width	77 cm
Length	87 cm
Weight	160 kg
Input Current	21 A
Product Code	8320100050

Technical Specifications	MKF-20SD
Capacity	200 kg - 4000 pcs. of Rod Electrodes
Max. Heating Degree	0 - 400 °C
Operating Power	3000 + 3000 Watt
Operating Voltage	380 - 400 Volt
Height	160 cm
Width	65 cm
Length	57 cm
Weight	175 kg
Input Current	14 + 14 A
Product Code	8320100S20



ELECTRODE AND WELDING FLUX DRYING OVENS

Welding Flux Drying Ovens

Technical Specifications	MKF-50T
Capacity	50 kg
Max. Heating Degree	0 - 400 °C
Operating Power	3000 Watt
Operating Voltage	380 - 400 Volt
Height	115 cm
Width	74 cm (94 cm with the electrical panel)
Length	70 cm
Weight	115 kg
Input Current	14 A
Product Code	8320200050



Technical Specifications	MKF-250T
Capacity	250 kg
Max. Heating Degree	0 - 400 °C
Operating Power	7500 Watt
Operating Voltage	380 - 400 Volt
Height	140 cm
Width	165 cm (185 cm with the electrical panel)
Length	85 cm
Weight	230 kg
Input Current	35 A
Product Code	8320200250

Technical Specifications	MKF-350T
Capacity	350 kg
Max. Heating Degree	0 - 400 °C
Operating Power	7500 Watt
Operating Voltage	380 - 400 Volt
Height	160 cm
Width	185 cm (205 cm with the electrical panel)
Length	87 cm
Weight	390 kg
Input Current	35 A
Product Code	8320200350



ABRASIVE PRODUCTS



Cut Off Discs MAGMACUT



MAGMACUT cut off discs are suitable for production of welded manufacturing, thin sheet metals, profiles, pipes and all structural steels (ST 37, 42, 52). It offers long lasting and fast clipping in cutting operations with its durable structure.



Product Code	Category		Dimensions	Quality	Rotation	Box Qty.	Inner Box Qty.	
813M111521	Flat	T41	115 x 2,5 x 22,23	4 1/2" x 3/32" x 7/8"	A 30 R BF	max. 13300 rpm	50	400
813M111522	Dished	T42	115 x 2,5 x 22,23	4 1/2" x 3/32" x 7/8"	A 30 R BF	max. 13300 rpm	50	400
813M112521	Flat	T41	125 x 2,5 x 22,23	5" x 3/32" x 7/8"	A 30 R BF	max. 12250 rpm	50	400
813M112522	Dished	T42	125 x 2,5 x 22,23	5" x 3/32" x 7/8"	A 30 R BF	max. 12250 rpm	50	400
813M111531	Flat	T41	115 x 3,0 x 22,23	4 1/2" x 1/8" x 7/8"	A 30 R BF	max. 13300 rpm	50	200
813M111532	Dished	T42	115 x 3,0 x 22,23	4 1/2" x 1/8" x 7/8"	A 30 R BF	max. 13300 rpm	50	200
813M112531	Flat	T41	125 x 3,0 x 22,23	5" x 1/8" x 7/8"	A 30 R BF	max. 12250 rpm	50	200
813M112532	Dished	T42	125 x 3,0 x 22,23	5" x 1/8" x 7/8"	A 30 R BF	max. 12250 rpm	50	200
813M118031	Flat	T41	180 x 3,0 x 22,23	7" x 1/8" x 7/8"	A 30 R BF	max. 8500 rpm	25	150
813M118032	Dished	T42	180 x 3,0 x 22,23	7" x 1/8" x 7/8"	A 30 R BF	max. 8500 rpm	25	150
813M123031	Flat	T41	230 x 3,0 x 22,23	9" x 1/8" x 7/8"	A 30 R BF	max. 6650 rpm	25	100
813M123032	Dished	T42	230 x 3,0 x 22,23	9" x 1/8" x 7/8"	A 30 R BF	max. 6650 rpm	25	100
813M111511	Flat	T41	115 x 1,0 x 22,23	4 1/2" x 1/25" x 7/8"	INOX A 60 T BF	max. 13300 rpm	25	400

Cut Off Discs MAGMACUT



MAGMACUT INOX PRO is suitable for cutting processes of thin stainless steel (inox) sheets, pipes and sheet bars. The product with special grains and hard structure is effective in the cutting process of stainless materials.



Product Code	Category		Dimensions	Quality	Rotation	Box Qty.	Inner Box Qty.	
813MP11511	Flat	T41	115 x 1,0 x 22,23	4 1/2" x 1/25" x 7/8"	INOX PRO A 60 T BF	max. 13300 rpm	25	400
813MP12511	Flat	T41	125 x 1,0 x 22,23	5" x 1/25" x 7/8"	INOX PRO A 60 T BF	max. 12250 rpm	25	400
813MP18016	Flat	T41	180 x 1,6 x 22,23	7" x 1/16" x 7/8"	INOX PRO A 60 T BF	max. 8500 rpm	40	320
813MP23019	Flat	T41	230 x 1,9 x 22,23	9" x 1/13" x 7/8"	INOX PRO A 60 T BF	max. 6650 rpm	30	120

ABRASIVE PRODUCTS



Grinding Discs MAGMAGRIND



MAGMAGRIND grinding discs provide efficient grinding operation on welding seams, low and high alloy steels, hard and soft steels and stainless-steel materials.



Product Code	Category	Dimensions		Quality	Rotation	Box Qty.	Inner Box Qty.
813M211567	T27	115 x 6,0 x 22,23	4 1/2" x 1/4" x 7/8"	A 24 R BF	max. 13300 rpm	25	100
813M212567	T27	125 x 6,0 x 22,23	5" x 1/4" x 7/8"	A 24 R BF	max. 12250 rpm	25	100
813M218067	T27	180 x 6,0 x 22,23	7" x 1/4" x 7/8"	A 24 R BF	max. 8500 rpm	25	60
813M218087	T27	180 x 8,0 x 22,23	7" x 5/16" x 7/8"	A 24 R BF	max. 8500 rpm	10	60
813M223067	T27	230 x 6,0 x 22,23	9" x 1/4" x 7/8"	A 24 R BF	max. 6650 rpm	10	40

Flap Discs MAGMAFLAP



MAGMAFLAP flap discs ensure effective cleaning of metal surfaces welded with different grain sizes, alloy or non-alloy steels, stainless steels, iron, etc. Longer operation time and consistent surface quality supports efficient work to be carried out.

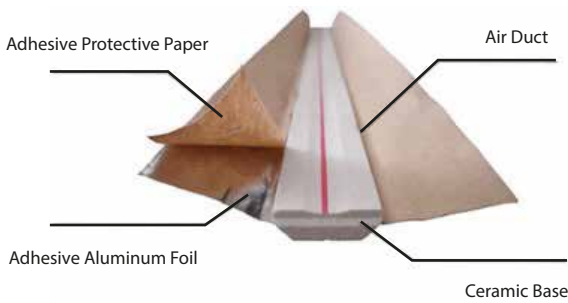


Product Code	Category	Dimensions		Quality	Rotation	Box Qty.	Inner Box Qty.
813M31154A	AO FLAP	115 x 22	Conic	40 P	max. 13300 rpm	10	180
813M31156A	AO FLAP	115 x 22	Conic	60 P	max. 13300 rpm	10	180
813M31158A	AO FLAP	115 x 22	Conic	80 P	max. 13300 rpm	10	180
813M31154Z	ZR FLAP	115 x 22	Conic	40 P	max. 13300 rpm	10	180
813M31156Z	ZR FLAP	115 x 22	Conic	60 P	max. 13300 rpm	10	180
813M31158Z	ZR FLAP	115 x 22	Conic	80 P	max. 13300 rpm	10	180
813M31254A	AO FLAP	125 x 22	Conic	40 P	max. 12250 rpm	10	180
813M31256A	AO FLAP	125 x 22	Conic	60 P	max. 12250 rpm	10	180
813M31258A	AO FLAP	125 x 22	Conic	80 P	max. 12250 rpm	10	180
813M31254Z	ZR FLAP	125 x 22	Conic	40 P	max. 12250 rpm	10	180
813M31256Z	ZR FLAP	125 x 22	Conic	60 P	max. 12250 rpm	10	180
813M31258Z	ZR FLAP	125 x 22	Conic	80 P	max. 12250 rpm	10	180

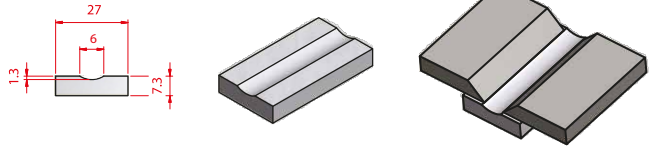
CERAMIC BACKINGS

Application Advantages

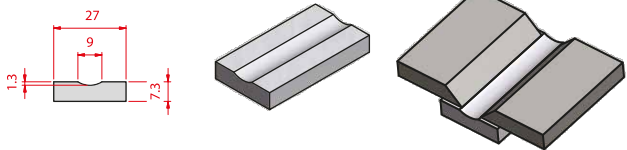
- It provides high weld seams root passes.
- It provides high fill efficiency.
- It significantly reduces the use of ceiling welding with tough welding positions.
- It provides the ability to make the source one-sided.



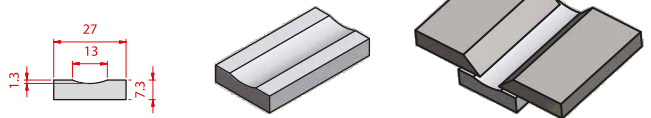
CB 11 - 060



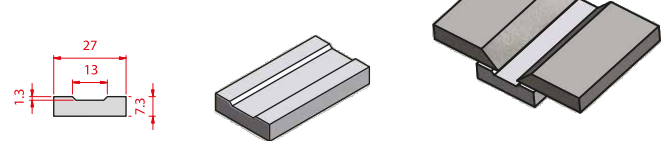
CB 11 - 100



CB 11 - 125



CB 21 - 150

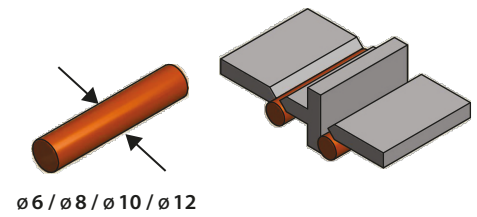


CB 50 - 60

CB 50 - 80

CB 50 - 100

CB 50 - 120



Product Code	Product Name	Pieces/Inner Box	Width	Thickness	Slot Width	Slot Depth	Length	Type
8110001106	CB 11-060	60 pcs.	27 mm	7.3 mm	6 mm	1.3 mm	600 mm	Flat/Circular Slotted
8110001110	CB 11-100	60 pcs.	27 mm	7.3 mm	9 mm	1.3 mm	500 mm	Flat/Circular Slotted
8110001112	CB 11-125	60 pcs.	27 mm	7.3 mm	13 mm	1.3 mm	500 mm	Flat/Circular Slotted
8110002115	CB 21-150	60 pcs.	27 mm	7.3 mm	13 mm	1.3 mm	500 mm	Flat / Rectangular Slotted
8110005006	CB 50 - 60	150 pcs.	-	6 mm	-	-	500 mm	Round
8110005008	CB 50 - 80	120 pcs.	-	8 mm	-	-	500 mm	Round
8110005010	CB 50 - 100	100 pcs.	-	10 mm	-	-	500 mm	Round
8110005012	CB 50 - 120	90 pcs.	-	12 mm	-	-	500 mm	Round

CARBON CUTTING AND GOUGING ELECTRODES



Carbon electrodes, can easily cut thick metals and can operate at high current values. They have the ability to open up to 25 mm grooves in one pass according to the diameter. The advantage of being able to observe cracks during grooving is that it is the most convenient way to shave untrimmed corners and unnecessary stacks.

Product Name	Product Code	Product Dimensions	Product Form
Carbon Cutting and Gouging Electrodes	812K001K20	5.0 x 305 mm	Flat
	812K002K20	6.5 x 305 mm	Flat
	812K003K21	8.0 x 305 mm	Flat
	812K004K20	9.5 x 305 mm	Flat
	812K004K21	10.0 x 305 mm	Flat
	812K005K22	11.0 x 305 mm	Flat
	812K006K23	13.0 x 305 mm	Flat
	812K109K26	9.0 x 355 mm	Flat
	812K112K26	16.0 x 355 mm	Extended
	812K116K22	10.0 x 430 mm	Extended
	812K117K23	11.0 x 430 mm	Extended
	812K118K25	13.0 x 430 mm	Extended
	812K119K25	16.0 x 430 mm	Extended
	Gouging Torch	7908201000	1000 Amps



TORCHES

MIG/MAG Torches and Accessories

Thanks to its industrial design providing high cooling power as well as a standard and high-quality consumables group, it provides a long usage life.

Hook Design

The Lava MIG 50WR model offers a choice of button group for parameter setting functions

The non-slip ergonomic grip structure provides ease of use

Offers high mobility capacity with individually designed connection ports



Pressure Regulator



CO₂ Heater

Control Options (50WR)

7920000302



7920000304



Technical Specifications		Lava MIG 15	Lava MIG 25	Lava MIG 35	Lava MIG 40	Lava MIG 50W	Lava MIG 50WR
Ampere	CO ₂	150 A	200 A	270 A	320 A	500 A	500 A
Operating Period		%60	%60	%60	%60	%100	%100
Cooling Type		Air	Air	Air	Air	Water	Water
Product Codes	Torch 3 m	7021030150	7021030200	7021030350	7021030400	7021030500	7021230500
	4 m	7021040150	7021040200	7021040350	7021040400	7021040500	7021240500
	5 m	7021050150	7021050200	7021050350	7021050400	7021050500	7021250500
	Regulator	7020001005					
	Heater	7020009002					
Kit**	7920000510	7920000520	7920000530	7920000540	7920000550	7920000560	

** Kit includes torch, regulator and CO₂ heater

TORCHES

TIG Torches and Accessories

Thanks to its industrial design providing high cooling power as well as a standard and high-quality consumables group, it provides a long usage life.

A choice of button group for parameter setting functions is available

The non-slip ergonomic grip structure provides ease of use

Offers high mobility capacity with individually designed connection ports

Provides excellent flexibility with genuine leather cover support



Pressure Regulator

Control Options

7910000003



7910000004



Technical Specifications		Lava TIG 20	Lava TIG 40W	
Ampere	DC	180 A	380 A	
	AC	150 A	270 A	
Operating Period		%35	%100	
Cooling Type		Air	Water	
Product Codes	Torch	4 m	7011040180	7011040380
		8 m	7011080180	7011080380
	Regulator		7020001004	
	Kit*	7910000510		7910000530

* Kit includes torch and regulator

Welding Masks



MKM 718 S



Solar Powered



100 x 60 mm
Field of Vision



1 / 30.000 s
Dimming Period



5 - 8 / 9 - 13
Dimming Degree



Lower Weight



MKM 616 MA



Solar Powered



100 x 45 mm
Field of Vision



1 / 30.000 s
Dimming Period



9 - 13
Dimming Degree



Lower Weight



MKM 616 S



Solar Powered



100 x 45 mm
Field of Vision



1 / 30.000 s
Dimming Period



9 - 13
Dimming Degree



Lower Weight

• We offer extremely safe welding masks with DIN 4 TM 1/1/1/2 EN 379 norm for preventing strong lights during the welding process with a perfect precision against light for the use of welders with our Magmaweld brand giving importance to eye health.

Domaines d'Application:

- Electrode (SMAW) • TIG AC & DC • TIG PULSE AC & DC • MIG / MAG / CO2 • MIG / MAG PULSE
- Plasma Cutting (PAC) • Plasma Arc Welding (PAW) • Carbon Cutting (CAC - A) • Grinding

Technical Specifications	MKM 718 S	MKM 616 MA / MKM 616 S
Optical Class	1/1/1/2	1/1/1/2
Field of Vision	100 x 60 mm	100 x 45 mm
Cartridge sizes	110.00 x 90.00 x 9.00 mm	110.00 x 90.00 x 9.00 mm
Dimming Degrees	DIN 5 - 8 / 9 - 13	DIN 9 - 13
Dimming Control	Inside, Variable Dimming	Inside, Variable Dimming
Sensors	4	2
On/Off	Automatic	Automatic
Power Source	With Solar Powered and Replaceable Lithium Battery	With Solar Powered and Replaceable Lithium Battery
Reaction Time	1 / 30.000 sec. From Bright to Dark	1 / 30.000 sec. From Bright to Dark
Time Delay	0.10 ~ 1.00 sec. Variable Potency Button	0.10 ~ 1.00 sec. Variable Potency Button
Operating Precision	≥ 5 A (DC); ≥ 5A (AC)	≥ 10 A (DC); ≥ 10A (AC)
Operating Temperatures	- 10 °C ~ + 60 °C	- 10 °C ~ + 60 °C
Storage Temperatures	- 20 °C ~ + 70 °C	- 20°C ~ + 70 °C
Weight	500 gr.	480 gr.
Product Code	8500405718	8500405616 / 8500405615

WELDING CHEMICALS

Welding Spray

Code: 8101000010



400 gr

- Prevents sticking of burr particles o the torch nozzle and workpiece, especially during the MIG/MAG welding.
- Extends the life of the nozzle, contact nozzle and gas distributor.
- Paint and marking can be applied to the treated metal.
- Industrial product.
- Provides long-term activity.
- Not flammable.
- Silicone-free.

Protective Welding Paste

Code: 8101000020



300 gr

- Prevents sticking of splashing parts to the torch in MIG/MAG welding operations.
- During the welding process, the tip of the hot torch is dipped into the nozzle wax in 2-3 mm.
- Protects the torch and extends the life of the consumables.
- Non-toxic, odorless and fumeless.
- Protects metal surface against corrosion
- Does not melt at room temperature.
- No combustion or flare
- Silicone, CFC, solvent free.

Anti Spatter

Code: 8105000016



25 kg

- Prevents sticking of burr particles o the torch nozzle and workpiece, especially during the MIG/MAG welding.
- Extends the life of the nozzle, contact nozzle and gas distributor.
- Prevents the welding splashes from sticking to the surface by being applied to the metal surface to be welded in the workpiece.
- Can be applied to the welding area and torch nozzle by spray or with a brush.
- No effect on paint process.
- Industrial product.
- Provides long-term activity.
- No combustion or flare
- Silicone-free.

Coolant

Code: 8105028872



4 lt

- Used in the plasma cutting unit cooling system.
- Extends the life of the plasma torch and consumables.
- Increases cutting speed and cut quality.
- Compatible with metal and non-metal parts of the machine.

Inox Paste

Code: 8105000131



2 kg

- The passive layer on the stainless surface can be damaged during the welding process or heat treatment on stainless surfaces and causes change of color and oxidation on the surface. Magmaweld Inox wax polish eliminates these negative effects on stainless surfaces. It is applied to the areas with color change where passivation is damaged with a brush when the material is cold and washed with water after waiting for 20-30 minutes.
- Short reaction time
- A homogenous color appearance is obtained without yellowing.

We Manufacture Welding Consumables & Equipment Since 1957

Magmaweld is a manufacturer of Stick Electrodes, MIG/MAG & TIG Wires, Flux Cored Wires, Submerged-Arc Wires and Fluxes, Welding Machines, Welding Ancillary Products and Automation Systems in Turkey. Oerlikon Kaynak Elektrodları ve Sanayi A.Ş. was founded in 1957 in order to manufacture stick electrodes as a licensee of Oerlikon-Buehrle AG.



+90 444 9353
magmaweld.com
info@magmaweld.com