



WELDING AND CUTTING MACHINES



(+90) 444 93 53
magmaweld.com
info@magmaweld.com

 (+90) 538 927 12 62

Magmaweld is a manufacturer of Stick Electrodes, MIG/MAG & TIG Wires, Flux Cored Wires, Submerged-Arc Wires and Fluxes, Welding Machines, Welding Ancillary Products and Automation Systems in Turkey. Oerlikon Kaynak Elektrodları ve Sanayi A.Ş. was founded in 1957 in order to manufacture stick electrodes as a licensee of Oerlikon-Buehrle AG.



Welding Consumables Factory
Organize Sanayi Bölgesi 2. Kısım, Manisa, Turkey



Welding Machines and Automation Factory
Organize Sanayi Bölgesi 5. Kısım, Manisa, Turkey

In the year 1996, in order to reduce costs, to strengthen the leading position in Turkey and turn Magmaweld into a global brand, two old factories in Istanbul were moved to new, state of the art factory in Manisa, situated in the west of Turkey. In 2010 the second factory has been opened also in Manisa to produce high-tech welding equipment as well as to integrate robotic automation systems.

The MAGMAWELD brand came out as an analogy between the molten core of the earth, the MAGMA and the WELDPPOOL.

Magmaweld greatly values technical education and has been contributing to the training and education of thousands of welders through regular, free of charge courses since 1961. This service helps to increase consumer awareness and technical competence throughout the industry.

Magmaweld strives for customer satisfaction and process excellence. In order to satisfy customer needs, all questions and remarks about products, training, welding technologies, welding procedures, standards, work safety and automation are processed through the call center at +90 444WELD (4449353) or through live support from www.magmaweld.com where the relevant information is directed to Magmaweld's experts.

CONTENTS

MMA WELDING MACHINES

Portable Stick Electrode (MMA) Inverters

proSTICK 200i, monoSTICK 165i, monoSTICK 180i, monoSTICK 200i, miniSTICK

4
6
7

Industrial Stick Electrode (MMA) Inverters

ID 250E, ID 300E, ID 350E, ID 400E

8

Thyristor Controlled Stick Electrode (MMA) Machines

RD 500E, RD 650E

10

Mechanically Controlled Stick Electrode (MMA) Machines

TD 355, GL 451, GL 600

11

GenSet Diesel Welding Generators

MPM 15/400 I-KA, MPM 20/500 P, MPM 500 P

12

Stick Electrode Welding (MMA) Accessories

15

TIG WELDING MACHINES

Portable TIG Inverters

monoTIG 160i Basic, monoTIG 160i, monoTIG 200i

16

Portable Professional TIG Inverters

monoTIG 160ip, monoTIG220ip, monoTIG 220ip AC/DC

18
20

Industrial TIG Inverters

ID 250T DC, ID 250T DC Pulse, ID 250TW DC, ID 250TW DC Pulse, ID 300T DC, ID 300T DC Pulse, ID 300TW DC, ID 300TW DC Pulse

22

TIG Welding Torches and Consumables

25

MIG/MAG WELDING MACHINES

Compact <200 A MIG / MAG Welding Machines

monoMIG 200ik, monoMAG 180, RS 200MK

26
28

Industrial Inverter MIG / MAG Welding Machines

ID 300MK, ID 300MK Pulse, ID 300M, ID 300M Pulse, ID 400M, ID 400MW, ID 400M Pulse, ID 400MW Pulse, ID 500M, ID 500MW, ID 500M Pulse, ID 500MW Pulse

30

Industrial Thyristor Controlled MIG / MAG Welding Machines

RD 650MW

32

Smart Step Controlled Industrial MIG / MAG Welding Machines

RS 350MK Pro, RS 350M Pro, RS 350MW Pro, RS 450M Pro, RS 450MW Pro, RS 550MW Pro

34

Classical Step Controlled Industrial MIG / MAG Welding Machines

RS 250MK, RS 250M, RS 300MK, RS 300M, RS 400MK, RS 400M, RS 400MW, RS 500M, RS 500MW

36
38

MIG/MAG Torches and Consumables

39

WELDING FUME EXTRACTION AND FILTRATION SYSTEMS

Mobile Models

DFS 1M, DFS 2M, DFS 1 MK, DFS 2 MK

40

Wall Mount Models

DFS 1S, DFS 2S, DFS 1 SK, DFS 2SK

42

Extraction Units

DES-SS, DES-MS

44

INDUSTRIAL SUBMERGED WELDING MACHINES

ZDS-1000 (Power Supply), MZC-1250F19 (Tractor), MZ9-1250B11 (Welding Head)

46

WELDING AND CUTTING MACHINES

MIG / MAG Welding Tractors

HK6 Single Torch, HK6 II Double Torch, HK6 W Oscillation, HK12 Max 3

48

DATA COLLECTION AND PROCESSING SYSTEMS (WELDING 4.0 by Magmaweld)

50



Portable Stick Electrode (MMA) Welding Machines

proSTICK 200i

Inverter Technology for Professionals



Steels
Stainless Steels
Cast Irons
Aluminium Alloys
Copper Alloys
Nickel Alloys

- Operates with 1 Phase 230V-50/60 Hz mains voltage and generators over 10 kVA, tolerates voltage fluctuations up to 15%. Auto-Protection against low and high input voltages.
- Due to inverter technology, energy efficiency is higher than the conventional machines.
- Offers excellent welding performance with all types of electrodes, including **cellulosic** and aluminum.
- Advanced options; **Hot Start** for easy ignition, **Arc Force** for arc stability, **Anti Stick** to prevent electrode sticking and **Interval Timer** for Spot welding.
- **VRD** for hazardous environments such as mines.
- TIG welding on even thin metals due to its stable low currents with **Lift TIG** arc ignition.
- Stable welding current without loss of performance due to electric line fluctuations or with long welding and electrical cables.
- **Smart Fan** dynamically regulates the cooling performance in accordance with the heating of the appliance.
- **Smart Thermic Protection** continuously monitors the inner temperature and if necessary stops the machine before the thermic switch.
- Portable lightweight design but withstands tough working conditions.
- Designed also for outdoor use, protection class is IP 23.
- Standard accessories come with the machine.

	proSTICK 200i
Mains Voltage (1-phase)	230 V - 50/60Hz
Rated Power	9.68 kVA (%14)
Rated Mains Current (I _{eff})	15.8 A (%14)
Welding Current Range	5 - 200 A DC
Rated Welding Current	200 A DC (%14)
Open Circuit Voltage	85 V DC
Stick Electrode Diameter Range	1.60 - 4.00 mm
Dimensions (l x w x h)	440 x 155 x 310 mm
Weight	12.5 kg
Protection Class	IP 23

Standard Accessories	
Workpiece Clamp and Cable	7905201603 (16 mm ² - 3 m)
Electrode Clamp and Cable	7906201603 (16 mm ² - 3 m)

Optional Accessories	
Lava TIG 20V (4 m) TIG Torch	7011240200
Lava TIG 20V (8 m) TIG Torch	7011280200

Portable Stick Electrode (MMA) Welding Machines

monoSTICK 165i, 180i, 200i

Inverter Technology for Workshops and Construction Sites



- Operates with 1 Phase 230V-50/60 Hz mains voltage and generators, tolerates voltage fluctuations up to 15%.
- Due to inverter technology, energy efficiency is higher than the conventional machines.
- Excellent welding characteristics for rutile and basic electrodes.
- Current adjustment scale by electrode diameters, digital display on 180i for easy parameter selection.
- Scratch TIG welding with a valve-torch.
- Stable welding current without loss of performance due to electric line fluctuations or with long welding and electrical cables.
- Designed also for outdoor use, protection class is IP 23.
- Portable lightweight design but withstands tough working conditions.
- Resists against tipping over scaffolds due to its wider base.
- Fan cooling and thermal protection against overheating.
- Standard accessories come with the machine.

	monoSTICK 165i	monoSTICK 180i	monoSTICK 200i
Mains Voltage (1-phase)	230 V - 50/60Hz	230 V - 50/60Hz	230 V - 50/60Hz
Rated Power	7.7 kVA (%20)	9.1 kVA (%15)	9.7 kVA (%14)
Rated Mains Current (I _{eff})	15.8 A (%20)	15.4 A (%15)	15.8 A (%14)
Welding Current Range	10 - 160 A DC	10 - 180 A DC	10 - 200 A DC
Rated Welding Current	160 A DC (%20)	180 A DC (%15)	200 A DC (%14)
Open Circuit Voltage	65 VDC	64 V DC	65 V DC
Stick Electrode Diameter Range	1.60 - 3.25 mm	1.60 - 4.00 mm	1.60 - 4.00 mm
Dimensions (l x w x h)	467 x 160 x 312 mm	467 x 160 x 312 mm	467 x 160 x 312 mm
Weight	7.5 kg	7.5 kg	10.5 kg
Protection Class	IP 23	IP 23	IP 23
Digital display	-	Yes	-

Standard Accessories

Workpiece Clamp and Cable	7905201603 (16 mm ² - 3 m)
Electrode Clamp and Cable	7906201603 (16 mm ² - 3 m)

Portable Stick Electrode (MMA) Welding Machines

miniSTICK

Inverter Technology for Small Workshops



- Operates with 1 Phase 230V-50/60 Hz mains voltage and generators, tolerates voltage fluctuations up to 15%.
- Due to inverter technology, energy efficiency is higher than the conventional machines.
- Excellent welding characteristics for rutile and basic electrodes.
- Current adjustment scale by electrode diameters for easy parameter selection.
- The smallest model of the family with a **weight of 4 kg** and the compact design, it can easily be carried or hanged by a shoulder strap.
- Scratch TIG welding with a valve-torch.
- Stable welding current without loss of performance due to electric line fluctuations or with longer welding and electrical cables.
- Designed also for outdoor use, protection class is IP 23.
- Fan cooling and thermal protection against overheating.
- Standard accessories come with the machine.

	miniSTICK
Mains Voltage (1-phase)	230 V - 50/60Hz
Rated Power	6.83 kVA (%15)
Rated Mains Current (I _{eff})	11.51 A (%15)
Welding Current Range	5 - 140 A DC
Rated Welding Current	140 A DC (%15)
Open Circuit Voltage	75 V DC
Stick Electrode Diameter Range	1.60 - 3.25 mm
Dimensions (l x w x h)	360 x 120 x 200 mm
Weight	4.25 kg
Protection Class	IP 23



Standard Accessories	Ministick Deluxe	Ministick
Workpiece Clamp and Cable	7905101602 (16 mm ² - 2 m)	7905101602 (16 mm ² - 2 m)
Electrode Clamp and Cable	7906101602 (16 mm ² - 2 m)	7906101602 (16 mm ² - 2 m)
Wire Brush / Hammer	8369000175	-
Hand Mask	8502301007	-
Electrode	1113010M30	-
Product Code	501M1500MF	501M1400MF



EN 60974-1

EN 60974 -10

RoHS



EN 60974-1

EN 60974 -10

RoHS

Industrial Stick Electrode (MMA) Welding Machines

ID Series

Inverter Technology for Construction Sites



Steels
Stainless Steels
Cast Irons
Aluminium Alloys
Copper Alloys
Nickel Alloys



- Operates with 3 Phase 400V-50/60 Hz mains voltage and generators, tolerates voltage fluctuations up to 15%.
- Due to inverter technology, energy efficiency is higher than the conventional machines.
- Excellent welding characteristics for Rutile, Basic and Cellulosic electrodes.
- Welding current is adjusted precisely by the potentiometer knob on the front panel or by the remote control. Preset values and welding current and voltage values are digitally monitored from the front panel.
- Advanced options; **Hot Start** for easy ignition, **Arc Force** for arc stability, **Anti Stick** to prevent electrode sticking
- Scratch TIG welding with a valve-torch.
- Stable welding current without loss of performance due to electric line fluctuations or with long welding and electrical cables.
- Fan cooling and thermal protection against overheating.
- Suitable for mobile use with optional trolley or rack systems to group 4, 6 or 9 machines.
- Standard accessories come with the machine.

	ID 250E	ID 300E	ID 350E	ID 400E
Mains Voltage (3-phase)	400 V / 50 - 60 Hz	400 V / 50 - 60 Hz	400 V / 50 - 60 Hz	400 V / 50 - 60 Hz
Rated Power	13 kVA (%35)	16.1 kVA (%30)	19.6 kVA (%35)	22.9 kVA (%35)
Rated Mains Current (I _{eff})	11.1 A (%35)	12.8 A (%30)	16.8 A (%35)	19.6 A (%35)
Welding Current Range	5 - 250 A DC	5 - 300 A DC	5 - 350 A DC	5 - 400 A DC
Rated Welding Current	250 A DC (%35)	300 A DC (%30)	350 A DC (%35)	400 A DC (%35)
Open Circuit Voltage	85 V DC	85 V DC	86 V DC	86 V DC
Stick Electrode Diameter Range	1.60 - 5.00 mm	1.60 - 5.00 mm	1.60 - 5.00 mm	1.60 - 6.00 mm
Dimensions (l x w x h)	526 x 250 x 408 mm	526 x 250 x 408 mm	585 x 307 x 515 mm	585 x 307 x 515 mm
Weight	21 kg	21 kg	32 kg	32 kg
Protection Class	IP 21	IP 21	IP 21	IP 21

Standard Accessories

Workpiece Clamp and Cable	7905212503 (25 mm ² - 3 m)	7905212503 (25 mm ² - 3 m)	7905203503 (35 mm ² - 3 m)	7905203503 (35 mm ² - 3 m)
Electrode Clamp and Cable	7906202503 (25 mm ² - 3 m)	7906202503 (25 mm ² - 3 m)	7906203503 (35 mm ² - 3 m)	7906203503 (35 mm ² - 3 m)

Optional Accessories

Remote Control 10m	7900000210	7900000210	7900000210	7900000210
Remote Control 20m	7900000220	7900000220	7900000220	7900000220
Remote Control 30m	7900000230	7900000230	7900000230	7900000230
Remote Control 40m	7900000240	7900000240	7900000240	7900000240
Remote Control 50m	7900000250	7900000250	7900000250	7900000250
Transport Trolley	7900000600	7900000600	7900000600	7900000600
Rack (4, vertical)	7900000804	7900000804	7900000804	7900000804
Rack (6, vertical)	7900000807	7900000807	7900000807	7900000807
Rack (9, vertical)	7900000809	7900000809	7900000809	7900000809
Lava TIG 20V (4 m) TIG Torch	7011240200	7011240200	7011240200	7011240200
Lava TIG 20V (8 m) TIG Torch	7011280200	7011280200	7011280200	7011280200



Transport Trolley



Rack



Remote Control

Industrial Stick Electrode (MMA) Welding Machines

RD 500E, RD 650E

Thyristor Technology for Challenging Applications

- Operates with 3 Phase 400V-50/60 Hz mains voltage and generators, tolerates voltage fluctuations up to 10%.
- Excellent welding characteristics for Rutile, Basic, Cellulosic electrodes up to 6.0 mm. and high carbon gauging performance up to 13mm with RD 650E model.
- Welding current is adjusted by the potentiometer knob on the front panel or by the remote control box. Set values and Real values of current and voltage during welding are digitally monitored from the front panel.
- Advanced Stick Electrode options; **Hot Start** for easy ignition, **Arc Force** for arc stability, **Anti Stick** to prevent electrode sticking.
- Stable welding current without loss of performance due to electric line fluctuations or with long welding and electrical cables.
- Due to its large wheels and telescopic arms, easy mobility on rough ground conditions.
- Fan cooling and thermal protection against overheating.
- Standard accessories come with the machine.



Steels
Stainless Steels
Cast Irons
Aluminium Alloys
Copper Alloys
Nickel Alloys



	RD 500E	RD 650E
Mains Voltage (3-phase)	400 V / 50 - 60 Hz	400 V / 50 - 60 Hz
Rated Power	42.9 kVA (25%)	47.1 kVA (40%)
Rated Mains Current (I_{eff})	65 A (25%)	74.5 A (40%)
Welding Current Range	10 - 500 A DC	10 - 650 A DC
Rated Welding Current	500 A DC (25%)	650 A DC (40%)
Open Circuit Voltage	85 V DC	78 V DC
Stick Electrode Diameter Range	2.00 - 6.00 mm	2.00 - 6.00 mm
Largest Carbon Electrode Diameter	8.00 mm	13.00 mm
Dimensions (l x w x h)	830 x 670 x 760 mm	830 x 670 x 760 mm
Weight	205 kg	215 kg
Protection Class	IP 21	IP 21

Standard Accessories		
Workpiece Clamp and Cable	7905305003 (50 mm ² - 3 m)	7905307003 (70 mm ² - 3 m)
Electrode Clamp and Cable	7906305005 (50 mm ² - 5 m)	7906307005 (70 mm ² - 5 m)

Optional Accessories		
Remote Control 10m	7900000210	
Remote Control 20m	7900000220	
Remote Control 30m	7900000230	
Remote Control 40m	7900000240	
Remote Control 50m	7900000250	
Carbon Gouging Clamp	7908201000	

Carbon Gouging Clamp



Industrial Stick Electrode (MMA) Welding Machines

TD 355, GL 451, GL 600

Magnetic Current Adjustment Technology for Remote Construction Sites



Steels
Stainless Steels
Cast Irons
Aluminium Alloys
Copper Alloys
Nickel Alloys



- Operates with 3 Phase 400V-50/60 Hz mains voltage and generators, tolerates voltage fluctuations up to 10%.
- Excellent welding characteristics for Rutile, Basic and Cellulosic electrodes and high carbon gauging performance with GL models.
- Possible to work with long welding cables.
- Current adjustment by turning handles and adjusted value is monitored through mechanical scales.
- Contains no electronic component, servicing is easy.
- Due to its large wheels and telescopic arms, easy mobility on rough ground conditions.
- Fan cooling and thermal protection against overheating.
- Standard accessories come with the machine.

	TD 355	GL 451	GL 600
Mains Voltage (3-phase)	400 V / 50 - 60 Hz	400 V / 50 - 60 Hz	400 V / 50 - 60 Hz
Rated Power	20 kVA (%35)	27 kVA (%35)	35 kVA (%35)
Rated Mains Current (I_{eff})	31 A (%35)	41 A (%35)	53 A (%35)
Welding Current Range	60 - 350 A DC	60 - 450 A DC	90 - 600 A DC
Rated Welding Current	320 A DC (%35)	450 A DC (%35)	600 A DC (%35)
Open Circuit Voltage	54 - 64 V DC	73 V DC	72 V DC
Stick Electrode Diameter Range	2.00 - 5.00 mm	2.50 - 6.00 mm	3.25 - 6.00 mm
Largest Carbon Electrode Diameter	-	8.00 mm	10.00 mm
Dimensions (l x w x h)	950 x 660 x 650 mm	920 x 660 x 900 mm	920 x 660 x 900 mm
Weight	125 kg	228 kg	244 kg
Protection Class	IP 21	IP 21	IP 21

Standard Accessories			
Workpiece Clamp and Cable	7905203503 (35 mm ² - 3 m)	7905305003 (50 mm ² - 3 m)	7905407003 (70 mm ² - 3 m)
Electrode Clamp and Cable	7906203505 (35 mm ² - 5 m)	7906305005 (50 mm ² - 5 m)	7906407005 (70 mm ² - 5 m)
Optional Accessories			
Carbon Gouging Clamp	-	7908201000	7908201000

Carbon Gouging Clamp



MPM Series



Steels
Stainless Steels
Cast Irons
Aluminium Alloys
Copper Alloys
Nickel Alloys



- Water cooled diesel engine generator set designed for welding, whereas it can be used as a normal generator with standard outputs 400V/50 Hz (3~), 230V/50 Hz (1~). Optionally, a 48V/110V output is also available.
- In addition to Rutile, Basic and Cellulosic coated electrode welding, Carbon Cutting, TIG (Lift TIG) and MIG/MAG welding with optional wire feeding unit are also possible.
- Welding current can be adjusted through the potentiometer on the front panel and also with the wired remote control.
- Current, voltage, fuel level and operating time indicators are on the front panel.
- No loss of performance with long welding cables.
- Especially designed for outdoor use, protection class is IP23.
- Ignites with a 12V internal battery and switches to idle position automatically when there is no load.
- Warnings are; low fuel level, low oil pressure, battery charge failure and protections are; against current leakage and overheating.
- Standard accessories come with the machine.
- Trailer is Optional.

Engine	MPM 15/400 I-KA	MPM 500 P	MPM 20/500 P
Type	Kubota D1105-E	Perkins 404D - 22G	Perkins 1103 A-33G1
Power	28 HP (20.6 kVA)	32.4 HP (23.50 kVA)	40.8 HP (30kVA)
Total Cylinder Capacity	1123 cm ³	2216 cm ³	3300 cm ³
Number of Cylinders	3	4	3
Cooling Type	Water	Water	Water
Operation Type	Electricity	Electricity	Electricity
Fuel Type	Diesel	Diesel	Diesel
Fuel Consumption	4.9 lt / h (%75)	4 lt / h (75%)	5.4 lt / h (%75)
Fuel Tank Volume	38 lt	70 lt	74 lt
Dimensions (l x w x h)	1590 x 730 x 920 mm	1855 x 737 x 1119 mm	2000 x 900 x 1200 mm
Weight	450 kg	895 kg	1080 kg

Generator	GenSet Asynchronous Brushless	GenSet Asynchronous Brushless	GenSet Asynchronous Brushless
Type	GenSet Asynchronous Brushless	GenSet Asynchronous Brushless	GenSet Asynchronous Brushless
Maximum Power (1 Phase)	10 kVA - 230 V AC	10 kVA - 230 V AC	12 kVA - 230 V AC
Maximum Power (3 Phase)	15 kVA - 400 V AC	17 kVA - 400 V AC (Op.)	20 kVA - 400 V AC
Power Factor	0.80	0.80	0.80

Welding Circuit	MPM 15/400 I-KA	MPM 500 P	MPM 20/500 P
Rated Welding Current	400 A - 35 V DC (%30)	500 A - 30 V DC (%40)	500 A - 40 V DC (%60)
Welding Current Range	30 - 400 A DC	30 - 500 A DC	30 - 500 A DC
Maximum Open Circuit Voltage	70 V DC	70 V DC	70 V DC
Stick Electrode Diameter Range	2.00 - 6.00 mm	2.00 - 6.00 mm	2.00 - 6.00 mm
Largest Carbon Electrode Diameter	6 mm	8 mm	10 mm

Accessories	MPM 15/400 I-KA	MPM 500 P	MPM 20/500 P
Workpiece Clamp and Cable	7905305003 (50 mm ² - 3 m)	7905407003 (70 mm ² - 5m)	7905407003 (70 mm ² - 5m)
Electrode Clamp and Cable	7906305005 (50 mm ² - 5 m)	7906407005 (70 mm ² - 5m)	7906407005 (70 mm ² - 5m)
Remote Control (Standard)	7950000009 (20 m)	7950000009 (20 m)	7950000009 (20 m)
Terminal Replacement Kit (Optional)	7950000007	7950000007	7950000007
Trailer (Optional)	7950000005 (2 Wheel)	7950000006 (2 Wheel)	7950000004 (2 Wheel)

Product Codes



	Standard (With Mains Plug)	Without Mains Plug
miniSTICK	501M1400MF	501M1400M0
miniSTICK Deluxe	501M1500MF	501M1500M0
monoSTICK 150i	501N1500MF	501N1500M0
monoSTICK 165i	501N1600MF	501N1600M0
monoSTICK 180i	501N180DMF	501N180DM0
monoSTICK 200i	501N201DMF	501N201DM0
monoSTICK 200ic	501N200DMF	501N200DM0
proSTICK 200i	501P200DMF	501P200DM0
ID 250E	-	5030250DM0
ID 300E	-	5030300DM0
ID 350E	-	5030350DM0
ID 400E	-	5030400DM0
RD 500E	-	502S500DM0
RD 650E	-	502S650DM0
TD 355	-	502M3500M0
GL 451	-	502M4500M0
GL 600	-	502M6000M0
MPM 15 - 400 IKA	-	550040W1G0
MPM 20 - 500 P	-	550050W3G0
MPM 500 P	-	550050W2G0

Stick Electrode (MMA) Welding Accessories



	Electrode Clamps	Grounding Pliers	Carbon Clamps	Remote Control	Transport Trolley	Rack
miniSTICK	7906101602 (16 mm ² - 2 m)	7905101602 (16 mm ² - 2 m)	-	-	-	-
monoSTICK 165i	7906201603 (16 mm ² - 3 m)	7905201603 (16 mm ² - 3 m)	-	-	-	-
monoSTICK 180i	7906201603 (16 mm ² - 3 m)	7905201603 (16 mm ² - 3 m)	-	-	-	-
monoSTICK 200i	7906201603 (16 mm ² - 3 m)	7905201603 (16 mm ² - 3 m)	-	-	-	-
monoSTICK 200ic	7906201603 (16 mm ² - 3 m)	7905201603 (16 mm ² - 3 m)	-	-	-	-
proSTICK 200i	7906201603 (16 mm ² - 3 m)	7905201603 (16 mm ² - 3 m)	-	-	-	-
				7900000210 (10 m)		7900000804 (4 items)
				7900000220 (20 m)		7900000806 (6 vertical)
ID 250E	7906202503 (25 mm ² - 3 m)	7905212503 (25 mm ² - 3 m)	-	7900000230 (30 m)	7900000600	7900000807 (6 horizontal)
				7900000240 (40 m)		7900000809 (9 items)
				7900000250 (50 m)		
				7900000210 (10 m)		7900000804 (4 items)
				7900000220 (20 m)		7900000806 (6 vertical)
ID 300E	7906202503 (25 mm ² - 3 m)	7905212503 (25 mm ² - 3 m)	-	7900000230 (30 m)	7900000600	7900000807 (6 horizontal)
				7900000240 (40 m)		7900000809 (9 items)
				7900000250 (50 m)		
				7900000210 (10 m)		7900000804 (4 items)
				7900000220 (20 m)		7900000806 (6 vertical)
ID 350E	7906203503 (35 mm ² - 3 m)	7905203503 (35 mm ² - 3 m)	-	7900000230 (30 m)	7900000600	7900000807 (6 horizontal)
				7900000240 (40 m)		7900000809 (9 items)
				7900000250 (50 m)		
				7900000210 (10 m)		7900000804 (4 items)
				7900000220 (20 m)		7900000806 (6 vertical)
ID 400E	7906203503 (35 mm ² - 3 m)	7905203503 (35 mm ² - 3 m)	-	7900000230 (30 m)	7900000600	7900000807 (6 horizontal)
				7900000240 (40 m)		7900000809 (9 items)
				7900000250 (50 m)		
				7900000210 (10 m)	-	-
				7900000220 (20 m)	-	-
RD 500E	7906305005 (50 mm ² - 5 m)	7905305003 (50 mm ² - 3 m)	7908201000	7900000230 (30 m)	-	-
				7900000240 (40 m)	-	-
				7900000250 (50 m)	-	-
				7900000210 (10 m)	-	-
				7900000220 (20 m)	-	-
RD 650E	7906307005 (70 mm ² - 5 m)	7905307003 (70 mm ² - 3 m)	7908201000	7900000230 (30 m)	-	-
				7900000240 (40 m)	-	-
				7900000250 (50 m)	-	-
TD 355	7906203505 (35 mm ² - 5 m)	7905203503 (35 mm ² - 3 m)	-	-	-	-
GL 451	7906305005 (50 mm ² - 5 m)	7905305003 (50 mm ² - 3 m)	7908201000	-	-	-
GL 600	7906407005 (70 mm ² - 5 m)	7905407003 (70 mm ² - 3 m)	7908201000	-	-	-

Portable TIG Welding Machines

monoTIG 160i Basic

Without HF Unit

- Operates with 1 Phase 230V-50/60 Hz mains voltage and generators, tolerates voltage fluctuations up to 15%.
- Due to inverter technology, energy efficiency is higher than the conventional machines.
- Excellent welding characteristics for rutile and basic electrodes.
- TIG welding with **Lift TIG** arc ignition.
- TIG torch with trigger and foot pedal (On / Off) can be used.
- Stable welding current without loss of performance due to electric line fluctuations or with long welding and electrical cables.
- Designed also for outdoor use, protection class is IP 23.
- Portable lightweight design but withstands tough working conditions.
- Fan cooling and thermal protection against overheating.
- Standard accessories come with the machine.



monoTIG160i

monoTIG 200i

With HF Unit

- Operates with 1 Phase 230V-50/60 Hz mains voltage and generators, tolerates voltage fluctuations up to 15%.
- Due to inverter technology, energy efficiency is higher than the conventional machines.
- TIG arc ignition by **HF** or **Lift TIG**.
- Thin metal sheet welding due to its stable low currents starting from 5 Ampere.
- Basic TIG settings; **Welding Current, Slope-Down, Post-Gas and Crater Filling**.
- Welding parameters are monitored on the digital display.
- Triggering via torch as 2/4 or with foot pedal as On/Off.
- Excellent welding characteristics for rutile and basic electrodes.
- Stable welding current without loss of performance due to electric line fluctuations or with long welding and electrical cables.
- Designed also for outdoor use, protection class is IP 23.
- Portable lightweight design but withstands tough working conditions.
- Fan cooling and thermal protection against overheating.
- Standard accessories come with the machine.



	monoTIG 160i Basic	monoTIG 160i	monoTIG 200i
Mains Voltage (1-phase)	230 V - 50/60Hz	230 V - 50/60Hz	230 V - 50/60Hz
Rated Power (MMA)	7.8 kVA (%20)	7.41 kVA (%30)	9.55 kVA (%25)
Rated Mains Current (I _{eff}) (MMA)	15.2 A (%20)	14.41 A (%30)	15.54 A (%25)
Rated Power (TIG)	5.2 kVA (%20)	5.01 kVA (%30)	6.69 kVA (%25)
Rated Mains Current (I _{eff}) (TIG)	10 A (%20)	11.95 A (%30)	14.55 A (%25)
Welding Current Range	10 - 160 A DC	5 - 160 A DC	5 - 200 A DC
Rated Welding Current	160 A DC (%20)	160 A DC (%30)	200 A DC (%25)
Open Circuit Voltage	20 - 65 V DC	65 V DC	65 V DC
Stick Electrode Diameter Range	1.60 - 3.25 mm	1.60 - 3.25 mm	2.00 - 4.00 mm
Tungsten Electrode Diameter Range	1.20 - 2.40 mm	1.20 - 2.40 mm	1.00 - 2.40 mm
Dimensions (l x w x h)	450 x 160 x 312 mm	520 x 160 x 312 mm	520 x 160 x 312 mm
Weight	9.5 kg	9.5 kg	10 kg
Protection Class	IP 23	IP 23	IP 23

Standard Accessories

	monoTIG 160i Basic	monoTIG 160i	monoTIG 200i
Workpiece Clamp and Cable	7905201603 (16 mm ² - 3 m)	7905201603 (16 mm ² - 3 m)	7905201603 (16 mm ² - 3 m)
Electrode Clamp and Cable	7906201603 (16 mm ² - 3 m)	-	-
Gas Hose	790700002 (2 m)	790700002 (2 m)	790700002 (2 m)
Torch (Air Cooled 4 m)	7011100004	7011040180	7011040180

Optional Accessories

	monoTIG 160i Basic	monoTIG 160i	monoTIG 200i
Water Cooling Unit (CSP 40)	7910005200	7910005200	7910005200
Gas Regulator	7020001004	7020001004	7020001004
Electrode clamps and cable	-	7906201603 (16 mm ² - 3 m)	7906201603 (16 mm ² - 3 m)
Lava TIG 20 (8 m) Air Cooled TIG Torch	-	7011080180	7011080180
Lava TIG 40W (4 m) Water Cooled TIG Torch	-	7011040380	7011040380
Lava TIG 40W (8 m) Water Cooled TIG Torch	-	7011080380	7011080380
TIG Accessory Set Air Cooled (Torch + Regulator)	-	7910000510	7910000510
Water Cooled TIG Accessory Set (Torch + Regulator)	-	7910000530	7910000530
Foot Pedal (On/Of)	7910000130	7910000130	7910000130
Trolley	7910000100	7910000100	7910000100



Trolley



Foot Pedal

Portable TIG Welding Machines

monoTIG 160ip

Inverter Pulse Technology for Workshops

- Operates with 1 Phase 230V-50/60 Hz mains voltage and generators, tolerates voltage fluctuations up to 15%.
- Due to inverter technology, energy efficiency is higher than the conventional machines.
- TIG arc ignition by **HF** or **Lift TIG**.
- Thin metal sheet welding due to its pulsing frequency up to 2 kHz.
- Advanced TIG settings; **Pre-Gas, Slope-Up, Welding Current, Pulse Frequency and Width, Slope-Down, Post-Gas and Crater Filling**.
- Offers 10 JOB memory.
- Triggering via torch as 2/4 or with foot pedal as On/Off.
- Welding parameters are monitored on the digital display.
- Excellent welding characteristics for rutile and basic electrodes.
- Stable welding current without loss of performance due to electric line fluctuations or with long welding and electrical cables.
- Designed also for outdoor use, protection class is IP 23.
- Portable lightweight design but withstands tough working conditions.
- Fan cooling and thermal protection against overheating.
- Standard accessories come with the machine.



Stainless Steels
Steels



monoTIG 220ip

Inverter-Pulse Technology with Advanced Functions

- Operates with 1 Phase 230V-50/60 Hz mains voltage and generators, tolerates voltage fluctuations up to 15%.
Extra protection against extremely high or low supply voltages.
- Due to inverter technology, energy efficiency is higher than the conventional machines.
- TIG arc ignition by **HF** or **Lift TIG**.
- Excellent welding of thin metals due to very stable low current performance and pulse abilities.
- Advanced TIG settings; **Pre-Gas, Slope-Up, Welding Current, Pulse Frequency and Width, Slope-Down, Post-Gas and Crater Filling**.
- Offers 100 JOB memory.
- Interval timer for spot welding.
- 2/4 Triggering and Current Adjustment via torch and foot pedal.
- Welding parameters are monitored on the digital display.
- Excellent welding characteristics for rutile and basic electrodes.
- Advanced Stick Electrode options; **Hot Start** for easy ignition, **Arc Force** for arc stability, **Anti Stick** to prevent electrode sticking.
- **VRD** for hazardous environments such as mines.
- Stable welding current without loss of performance due to electric line fluctuations or with long welding and electrical cables.
- Portable design, withstands tough working conditions.
- Fan cooling and thermal protection against overheating.
- Standard accessories come with the machine.



Stainless Steels
Steels
Copper Alloys
Nickel Alloys



	monoTIG 160ip	monoTIG 220ip
Mains Voltage (1-phase)	230 V - 50/60Hz	230 V - 50/60Hz
Rated Power (MMA)	7.6 kVA (%20)	9.2 kVA (%15)
Rated Mains Current (I _{eff}) (MMA)	14.8 A (%20)	15.53 A (%15)
Rated Power (TIG)	5.1 kVA (%30)	8.05 kVA (%20)
Rated Mains Current (I _{eff}) (TIG)	12.2 A (%30)	15.66 A (%20)
Welding Current Range	30 - 160 A DC	3 - 220 A DC
Rated Welding Current	160 A DC (%30)	220 A DC (%20)
Open Circuit Voltage	75 V DC	87 V DC
Stick Electrode Diameter Range	2.00 - 3.25 mm	2.00 - 5.00 mm
Tungsten Electrode Diameter Range	1.60 - 2.40 mm	1.00 - 2.40 mm
Dimensions (l x w x h)	515 x 160 x 312 mm	474 x 221 x 395 mm
Weight	10 kg	15.5 kg
Protection Class	IP 23	IP 21

Standard Accessories

	monoTIG 160ip	monoTIG 220ip
Workpiece Clamp and Cable	7905201603 (16 mm ² - 3 m)	7905201603 (16 mm ² - 3 m)
Gas Hose	790700002 (2 m)	790700002 (2 m)
Torch (Air Cooled 4 m)	7011040180	7011040180

Optional Accessories

	monoTIG 160ip	monoTIG 220ip
Electrode clamp and cable	7906201603 (16 mm ² - 3 m)	7906201603 (16 mm ² - 3 m)
Gas Regulator	7020001004	7020001004
Water Cooling Unit (CSP 40)	7910005200	7910005200
Lava TIG 20 (8 m) Air Cooled TIG Torch	7011080180	7011080180
Lava TIG 40W (4 m) Water Cooled TIG Torch	7011040380	7011040380
Lava TIG 40W (8 m) Water Cooled TIG Torch	7011080380	7011080380
TIG Accessory Set Air Cooled (Torch + Regulator)	7910000510	7910000510
Water Cooled TIG Accessory Set (Torch + Regulator)	7910000530	7910000530
Foot Pedal (On/Of)	7910000130	7910000120
Foot Pedal (Current Adjustable)	-	7910000140
Transport Trolley	7910000100	7910000100



Trolley



Foot Pedal

Portable TIG Welding Machines

monoTIG 220ip AC/DC

Inverter-Pulse Technology with Advanced Functions



Aluminium Alloys
Stainless Steels
Steels
Copper Alloys
Nickel Alloys



- Operates with 1 Phase 230V-50/60 Hz mains voltage and generators, tolerates voltage fluctuations up to 15%.
- Extra protection against extremely high or low supply voltages.
- Due to inverter technology, energy efficiency is higher than the conventional machines.
- TIG arc ignition by **HF** or **Lift TIG**.
- Excellent welding of thin metals due to very stable low current performance and pulse abilities.
- Balance adjustment of AC Current.
- Advanced TIG settings; **Pre-Gas, Slope-Up, Welding Current, Pulse Frequency and Width, Slope-Down, Post-Gas and Crater Filling**.
- Offers 100 JOB memory.
- Interval timer for spot welding.
- 2/4 Triggering and Current Adjustment via torch and foot pedal.
- Welding parameters are monitored on the digital display.
- Excellent welding characteristics for rutile and basic electrodes.
- Advanced Stick Electrode options; **Hot Start** for easy ignition, **Arc Force** for arc stability, **Anti Stick** to prevent electrode sticking.
- **VRD** for hazardous environments such as mines.
- Stable welding current without loss of performance due to electric line fluctuations or with long welding and electrical cables.
- Portable design, withstands tough working conditions.
- Fan cooling and thermal protection against overheating.
- Standard accessories come with the machine.

monoTIG 220ip AC/DC	
Mains Voltage (1-phase)	230 V - 50/60Hz
Rated Power (MMA)	9.2 kVA (%15)
Rated Mains Current (I _{eff}) (MMA)	15.53 A (%15)
Rated Power (TIG)	8.05 kVA (%20)
Rated Mains Current (I _{eff}) (TIG)	15.66 A (%20)
Welding Current Range	3 - 220 A
Rated Welding Current	220 A (%20)
Open Circuit Voltage	87 V
Stick Electrode Diameter Range	2.00 - 5.00 mm
Tungsten Electrode Diameter Range	1.00 - 2.40 mm
Dimensions (l x w x h)	529 x 221 x 395 mm
Weight	16.5 kg
Protection Class	IP 21

Standard Accessories

Workpiece Clamp and Cable	7905201603 (16 mm ² - 3 m)
Gas Hose	790700002 (2 m)
Torch (Air Cooled 4 m)	7011040180

Optional Accessories

Electrode clamp and cable	7906201603 (16 mm ² - 3 m)
Gas Regulator	7020001004
Water Cooling Unit (CSP 40)	7910005200
Lava TIG 20 (8 m) Air Cooled TIG Torch	7011080180
Lava TIG 40W (4 m) Water Cooled TIG Torch	7011040380
Lava TIG 40W (8 m) Water Cooled TIG Torch	7011080380
TIG Accessory Set Air Cooled (Torch + Regulator)	7910000510
Water Cooled TIG Accessory Set (Torch + Regulator)	7910000530
Foot Pedal (On/Of)	7910000120
Foot Pedal (Current Adjustable)	7910000140
Transport Trolley	7910000100



Trolley



Foot Pedal

Industrial TIG Welding Machines

ID Series

High Capacity Inverter-Pulse Technology with Advanced Functions



Stainless Steels
Steels
Copper Alloys
Nickel Alloys



- Operates with 3 Phase 400V-50/60 Hz mains voltage and generators, tolerates voltage fluctuations up to 15%.
- Due to inverter technology, energy efficiency is higher than the conventional machines.
- TIG arc ignition by HF or Lift TIG.
- Excellent welding of thin metals due to very stable low current performance and pulse abilities.
- Advanced TIG settings; **Pre-Gas, Slope-Up, Welding Current, Pulse Frequency and Width, Slope-Down, Post-Gas and Crater Filling.**
- Offers 10 JOB memory.
- Interval timer for spot welding.
- 2/4 Triggering and Current Adjustment via torch and foot pedal.
- Welding parameters are monitored on the digital display.
- Excellent welding characteristics for wide range of stick electrodes.
- Advanced Stick Electrode options; **Hot Start** for easy ignition, **Arc Force** for arc stability, **Anti Stick** to prevent electrode sticking.
- **VRD** for hazardous environments such as mines.
- Stable welding current without loss of performance due to electric line fluctuations or with long welding and electrical cables.
- Optional gas cylinder platform with large wheels to ease mobility in workshops.
- Fan cooling and thermal protection against overheating.
- Standard accessories come with the machine.

Standard	ID 250 T DC	ID 300 T DC
Pulsed	ID 250 T DC Pulse	ID 300 T DC Pulse
Standard Water Cooled	ID 250 TW DC	ID 300 TW DC
Pulsed Water Cooled	ID 250 TW DC Pulse	ID 300 TW DC Pulse
Mains Voltage (3-phase)	400 V - 50/60 Hz	400 V - 50/60 Hz
Rated Power (MMA)	13 kVA (%35)	16.1 kVA (%30)
Rated Mains Current(I _{eff}) (MMA)	11.1 A (%35)	12.8 A (%30)
Rated Power (TIG)	9.5 kVA (%35)	12.3 kVA (%30)
Rated Mains Current (I _{eff}) (TIG)	8.2 A (%35)	9.8 A (%30)
Welding Current Range	5 - 250 A DC	5 - 300 A DC
Rated Welding Current	250 A DC (%35)	300 A DC (%30)
Open Circuit Voltage	85 V DC	85 V DC
Stick Electrode Diameter Range	1.60 - 4.00 mm	1.60 - 5.00 mm
Tungsten Electrode Diameter Range	1.00 - 2.40 mm	1.00 - 2.40 mm
Dimensions (l x w x h)	598 x 252 x 661 mm	598 x 252 x 661 mm
Weight	43 kg	43 kg
Protection Class	IP 21	IP 21

Cooling Unit	
Cooling Capacity	2.07 kW
Power Absorbed from Mains	0.265 kVA
Current Absorbed from Mains	0.650 A
Dimensions	430 x 320 x 280 mm
Weight	23 kg

Standard Accessories		
Workpiece Clamp and Cable	7905212503 (25 mm ² - 3 m)	7905203503 (35 mm ² - 3 m)
Gas Hose	790700002 (2 m)	790700002 (2 m)
Lava TIG 20 (4 m) Air Cooled TIG Torch*	7011040180	7011040180
Lava TIG 40W (4 m) Water Cooled TIG Torch*	7011040380	7011040380

* Torch selection is according to the cooling type of the machine.

Optional Accessories		
Electrode Clamp and Cable	7906202503 (25 mm ² - 3 m)	7906203503 (35 mm ² - 3 m)
Lava TIG 20 (8 m) Air Cooled TIG Torch	7011080180	7011080180
Lava TIG 40W (8 m) Water Cooled TIG Torch	7011080380	7011080380
Water Cooling Unit (CST 60i)	K307000014	K307000014
Foot Pedal (On / Off)	7910000120	7910000120
Foot Pedal (Current Adjustable)	7910000140	7910000140
Torch Control Tools (2 Button / 4 Button)	7910000003/7910000004	7910000003/7910000004
Transport Trolley (4 Wheels)	7910000200	7910000200
Gas Regulator (Argon)	7020001004	7020001004
TIG Accessory Set Air Cooled (Torch + Regulator)	7910000510	7910000510
Water Cooled TIG Accessory Set (Torch + Regulator)	7910000530	7910000530

Product Codes



	Standard	Pulse
monoTIG 160i Basic	511016B2MF	-
monoTIG 160ip	-	511016P2MF
monoTIG 200	511020N2MF	-
monoTIG 220ip DC	-	511022P2LF
monoTIG 220ip AC/DC	-	515022P2MF
ID 250T DC	51302502M0	513025P2M0
ID 250TW DC	51322502M0	513225P2M0
ID 300T DC	51303002M0	513030P2M0
ID 300TW DC	51323002M0	513230P2M0

TIG Torches and Consumables

Control Options		100 - 200 A	200 - 350 A	
791000003				
791000004		Lava TIG 20	Lava TIG 40W	
Welding Capacity	DC	180 A	380 A	
	AC	150 A	270 A	
Duty Cycle		%35	%100	
Ordering Codes	4 m	7011040180	7011040380	
	8 m	7011080180	7011080380	
Cooling Type		Air	Water	
Consumables				
Nozzle		6.00 mm / No 4	7014000604	7014000604
		8.00 mm / No 5	7014000805	7014000805
		10.00 mm / No 6	7014001006	7014001006
		11.00 mm / No 7	-	-
		12.00 mm / No 8	7014001108	7014001108
		16.00 mm / No 10	7014001610	7014001610
Clamp Holder		1.00 mm	7013000110 / -	7013000110 / -
		1.60 mm	7013000116 / -	7013000116 / -
		2.00 mm	7013000120 / -	7013000120 / -
		2.40 mm	7013000124 / 7016000024	7013000124 / 7016000024
		3.20 mm	7013000132 / -	7013000132 / -
		4.00 mm	7013000140 / -	7013000140 / -
Insulation	Top		7017000101	7017000101
	Bottom		7017000102	7017000102
Electrode Clamp		1.00 mm	7012000010	7012000010
		1.60 mm	7012000016	7012000016
		2.00 mm	7012000020	7012000020
		2.40 mm	7012000024	7012000024
		3.20 mm	7012000032	7012000032
		4.00 mm	7012000040	7012000040
Pear Cover	Short		701500102	701500102
	Long		701500101	701500101
Tung. Electrode		1.60 mm	-	7018000116
		2.00 mm	-	7018000120
		2.40 mm	-	7018000124
		3.20 mm	-	7018000132
		4.00 mm	-	7018000140

WT - 20 (Red)

Compact <200 A MIG / MAG Welding Machines

monoMIG 200ik

Inverter Technology for Workshops



Steels
Stainless Steels
Aluminium Alloys



Optional
Spool Gun

- Operates with 1 Phase 230V-50/60 Hz mains voltage and generators, tolerates voltage fluctuations up to 15%.
- Due to inverter technology, energy efficiency is higher than the conventional machines.
- Excellent welding characteristics with all types of solid and flux cored wires with CO₂ or Mix gases. EN, EP Connectivity.
- **Welding Voltage, Wire Feeding Speed, Soft Start, Pre-Gas, Post-Gas, Burn-Back** timer settings and **2/4 Trigger** options are adjusted on the front panel.
- Large digital displays for easy monitoring welding parameters.
- Manual wire feeding and gas valve buttons.
- Ø300 mm, Ø270 mm and Ø200 mm spools, drums of any size and Ø100 mm spool with a spool gun can be used.
- 24V AC outlet for CO₂ gas heater.
- Built in gas cylinder platform with large wheels to ease mobility in workshops.
- Fan cooling and thermal protection against overheating.
- Standard accessories come with the machine.

	monoMIG 200ik
Mains Voltage (1-phase)	230 V - 50/60Hz
Rated Power	8.6 kVA (%16)
Rated Mains Current (I _{eff})	15 A (%16)
Welding Current Range	30 - 200 A DC
Rated Welding Current	200 A DC (%16)
Dimensions (l x w x h)	888 x 455 x 870 mm
Weight (Torch Excluded)	48 kg
Protection Class	IP 21

Wire Feed System

Wire Diameter Range	0.60 - 1.00 mm
Standard Wire Rollers	0.80 - 1.00 mm
Roller Diameter	2 x 37 mm
Wire Feeding Speed	1 - 24 m/min.
Trigger Control	2 / 4
Spool Capacity	15 kg

Standard Accessories

Workpiece Clamp and Cable	7905201602 (16 mm ² - 2 m)
Gas Hose	790700002 (2 m)
MIG / MAG CO ₂ Accessory Set* (Torch + Heater + Regulator)	7920000521
MIG/MAG Mix/Argon Accessory Set* (Torch + Regulator)	7920000525

* Should be verified during ordering.

Optional Accessories

Lava MIG 25 (3 m) Air Cooled MIG Torch	7021030150
Lava MIG 25 (4 m) Air Cooled MIG Torch	7021040200
Lava MIG 25 (5 m) Air Cooled MIG Torch	7021050200
Gas Regulator (CO ₂)	7020001005
Gas Regulator (Mix)	7020001004
CO ₂ Heater (24V)	7020009003
Spool Gun	7021360180



Spool Gun



MIG/MAG Torch



Regulator



CO₂ Heater

Compact <200 A MIG / MAG Welding Machines

Single Phase: monoMAG 180
Three-Phase: RS 200MK



Steels
Stainless Steels
Aluminium Alloys

Step Transformer-Rectifier Technology for Workshops



- monoMAG 180K is ideal for small repair shops. RS 200MK is suitable for manufacturing with thin steel profiles and metal sheets and is more powerful than monoMAG 180K.
- Excellent welding characteristics with all types of solid and flux cored wires with CO₂ or Mix gases.
- Welding voltage and wire feed speed (corresponding to welding current) are set on the front panel. Optimum welding parameters can be selected from the table on the front panels. RS 200MK has digital V, A Meters.
- Manual wire feeding & gas valve buttons, **Soft Start, Pre-Gas, Post-Gas, Burn-Back** timer settings are in the wire feeding cabinet.
- RS 200MK works with 2/4 torch trigger mode while monoMAG 180K works only with on/off mode.
- Ø300 mm, Ø270 mm and Ø200 mm spools and drums of any size can be used.
- 220V AC outlet for CO₂ gas heater.
- Built in gas cylinder platform with large wheels to ease mobility in workshops.
- Fan cooling and thermal protection against overheating.
- Standard accessories come with the machine.

	monoMAG 180	RS 200MK
Mains Voltage (1-phase)	230 V - 50/60Hz (1 Ph.)	400 V - 50/60 Hz (3 Ph.)
Rated Power	6.2 kVA (%20)	7.9 kVA (%23)
Rated Mains Current (I _{eff})	12.5 A (%20)	12 A (%23)
Welding Current Range	30 - 140 A DC	40 - 240 A DC
Rated Welding Current	140 A DC (%20)	240 A DC (%33)
Open Circuit Voltage Range	14 - 29 V DC	17 - 36 V DC
Number of Voltage Adjustment Steps	7	2 x 7
Dimensions (l x w x h)	888 x 455 x 870 mm	890 x 460 x 950 mm
Weight (Torch Excluded)	79 kg	101 kg
Protection Class	IP 21	IP 21

Wire Feed System

Wire Diameter Range	0.60 - 1.00 mm
Standard Wire Rollers	0.80 - 1.00 mm
Roller Diameter	2 x 37 mm
Wire Feeding Speed	1 - 24 m/min.
Trigger Control	2 / 4
Spool Capacity	15 kg

Standard Accessories

Workpiece Clamp and Cable	7905201603 (16 mm ² - 3 m)	
Gas Hose	790700002 (2 m)	
MIG / MAG CO ₂ Accessory Set* (Torch + Heater + Regulator)	7920000510	7920000520
MIG/MAG Mix/Argon Accessory Set* (Torch + Regulator)	7920000515	7920000525

* Should be verified during ordering.

Optional Accessories

Lava MIG 25 (3 m) Air Cooled MIG Torch	-	7021030200
Lava MIG 25 (4 m) Air Cooled MIG Torch	-	7021040200
Lava MIG 25 (5 m) Air Cooled MIG Torch	-	7021050200
Gas Regulator (CO ₂)	7020001005	7020001005
Gas Regulator (Mix)	7020001004	7020001004
CO ₂ Heater (220V)	7020009002	7020009002



Regulator



CO₂ Heater



MIG/MAG Torch

Industrial Inverter MIG / MAG Welding Machines

ID Series (CC / CV)

Synergic Inverter-Pulse Technology for Production



Steels
Stainless Steels
Aluminium Alloys
Copper Alloys
Nickel Alloys



- Operates with 3 Phase 400V-50/60 Hz mains voltage and generators, tolerates voltage fluctuations up to 15%.
- Due to inverter technology, energy efficiency is higher than the conventional machines.
- Excellent welding characteristics with all types of solid and flux cored wires with CO₂ or Mix gases.
- Multi process welding; MIG/MAG, Stick Electrode, Carbon Gauging and TIG welding.
- No Spatter welding due to advanced electronically optimized inductance and pulsing functions. Excellent welding characteristics for all methods.
- 3 Operating Modes; Synergistic, Easy, Basic. Conventional. With these options a welder can adapt from basic to synergic welding easily.
- ONE LCD for ALL parameter selection; Wire type, wire diameter, gas type and thickness of the base metal for **Synergic Welding and Soft Start, Pre-Gas, Post-Gas, Burn-Back, Crater Filling** timer settings as GENERAL SETTINGS.
- 4 Different JOB and 2/4/6 Trigger mode selection from TORCH.
- Industry 4.0 features such as; OEE, Arc-On Time reporting, WP setting/controlling/reporting, Barcode and RF Card reading. (Optional)
- Compact and Separate Wire Feeder models are available.
- 4 Wheel Drive system, offers very powerful feedability for longer torches and offers less deformation on soft wires such as aluminum and flux cored wires.
- ROBOT connectivity due to very stable arc and advanced communication possibilities.
- The Separate wire feeder standard harness length is 5 m and can be extended up to 30 m upon request.
- Manual wire feeding & gas valve buttons are inside of the wire feeding cabinet.
- Ø300 mm, Ø270 mm and Ø200 mm diameter spools and drums of any size can be used.
- 24V AC outlet for CO₂ gas heater.
- Stable welding current without loss of performance due to electric line fluctuations or with long welding and electrical cables.
- Built in gas cylinder platform with large wheels to ease mobility in workshops. Multipurpose drawer replaces water cooling unit if it is not needed.
- Intelligent control of temperature reduces energy consumption and extends the fan and machine life. (SmartFan)
- Torch water cooling unit provides powerful cooling up to 40°C ambient temperature. (Water-cooled (W) models)
- Submerged arc welding head can be coupled easily. (Option)
- Standard accessories come with the machine.

Standard	ID 300M / ID 300 MK	ID 400M	ID 500M
Pulsed	ID 300M Pulse / ID 300MK Pulse	ID 400M Pulse	ID 500M Pulse
Standard Water Cooled		ID 400MW	ID 500MW
Pulsed Water Cooled		ID 400MW Pulse	ID 500MW Pulse
Mains Voltage (3-phase)	400 V - 50/60 Hz	400 V - 50/60 Hz	400 V - 50/60 Hz
Rated Power	15.1 kVA (%40)	22.45 kVA (%40)	32.5 kVA (%40)
Rated Mains Current (I _{eff})	13.8 A (%40)	20.7 A (%40)	30 A (%40)
Welding Current Range	50 - 300 A DC	50 - 400 A DC	50 - 500 A DC
Rated Welding Current	300 A DC (%40)	400 A DC (%40)	500 A DC (%40)
Maximum Open Circuit Voltage	62 V DC	82 V DC	82 V DC
Dimensions (l x w x h)	1075 x 531 x 1334 mm	1075 x 531 x 1334 mm	1075 x 531 x 1334 mm
Weight	Air-Cooled	93,5 kg	103,5 kg
	Water Cooled	-	108,5 kg
Protection Class	IP 21	IP 21	IP 21
Wire Feed System			
Wire Diameter Range	0.80 - 1.00 mm	1.00 - 1.20 mm	1.00 - 1.20 mm
Standard Wire Rollers	0.80 / 1.00 mm	1.00 / 1.20 mm	1.20 / 1.60 mm
Roller Diameter	4 x 37 mm	4 x 37 mm	4 x 37 mm
Wire Feeding Speed	1 - 21.5 m/min.	1 - 21.5 m/min.	1 - 21.5 m/min.
Trigger Control	2 / 4 / 6 - 4 Job	2 / 4 / 6 - 4 Job	2 / 4 / 6 - 4 Job
Dimensions (l x w x h)	660 x 315 x 443 mm	660 x 315 x 443 mm	660 x 315 x 443 mm
Weight	21,5 kg	22,5 kg	23,7 kg
Cooling System			
Cooling Capacity	-	1.02 kW	1.02 kW
Rated Power	-	0.266 kVA	0.266 kVA
Rated Current	-	0.650 A	0.650 A
Dimensions (l x w x h)	-	430 x 320 x 280 mm	430 x 320 x 280 mm
Weight	-	23 kg	23 kg
Standard Accessories			
Workpiece Clamp and Cable	7905212505 (25 mm ² - 5 m)	7905203505 (35 mm ² - 5 m)	7905407005 (70 mm ² - 5 m)
Gas Hose	790700002 (2 m)	790700002 (2 m)	790700002 (2 m)
MIG / MAG CO ₂ Accessory Set* (Torch + Heater + Regulator)	7920000531	7920000531 / 7920000551	7920000541 / 7920000551
MIG/MAG Mix/Argon Accessory Set* (Torch + Regulator)	7920000535	7920000535 / 7920000555	7920000545 / 7920000555
* Should be verified during ordering.			
Optional Accessories			
CO ₂ Heater (24 V)	7020009003	7020009003	7020009003
Gas Regulator (CO ₂)	7020001005	7020001005	7020001005
Gas Regulator (Mix)	7020001004	7020001004	7020001004
Lava MIG 35 Air Cooled MIG Torch (3 m)	7021030350	-	-
Lava MIG 40 (3 m) Air Cooled MIG Torch	7021030400	-	-
Lava MIG 50W Water Cooled MIG Torch (3m)	-	7021030500	7021030500



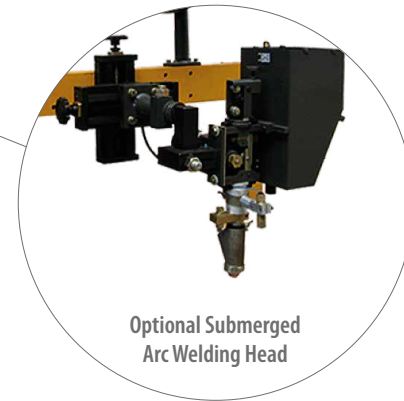
Industrial Thyristor Controlled MIG / MAG Welding Machines

RD 650MW

Thyristor Technology for Heavy Industries



Steels
Stainless Steels
Aluminium Alloys
Copper Alloys
Nickel Alloys



Optional Submerged Arc Welding Head

- Operates with 3 Phase 400V-50/60 Hz mains voltage and generators, tolerates voltage fluctuations up to 15%.
- Excellent welding characteristics with all types of solid and flux cored wires with CO₂ or Mix gases.
- Up to 2.8 mm wire diameter can be used with Flux Cored and Subarc welding processes.
- The Separate wire feeder standard harness length is 5 m and can be extended up to 30 m upon request.
- 4 roll drive system offers good feedability with long torches and offers less deformation on soft wires such as aluminum and flux cored wires.
- Welding Voltage, Wire Speed, **Soft Start**, **Pre-Gas**, **Post-Gas**, **Burn-Back** timers and **2/4 trigger** are set on the front panel of the wire feeder.
- Optimum welding parameters can be obtained from the printed table inside of the wire feed cover.
- Digital displays on the wire feeder for adjusting and monitoring welding parameters.
- Manual wire feeding & gas valve buttons are inside of the wire feeding cabinet.
- Multiple workpiece connections (Inductance outlets) enables optimum parameter adjustment for low spatter welding.
- Ø300 mm, Ø270 mm and Ø200 mm spools and drums of any size can be used.
- 220V AC outlet for CO₂ gas heater.
- Multiple workpiece connections (Inductance outlets) enables optimum parameter adjustment for low spatter welding.
- Stable welding current without loss of performance due to electric line fluctuations or with long welding and electrical cables.
- Built in gas cylinder platform with large wheels to ease mobility in workshops.
- Fan cooling and thermal protection against overheating.
- Torch water cooling unit provides powerful cooling up to 40°C ambient temperature.
- Submerged arc welding head can be coupled easily. (Option)
- Standard accessories come with the machine.

RD 650MW	
Mains Voltage (3-phase)	400 V - 50/60 Hz
Rated Power	48.5 kVA (%40)
Rated Mains Current (I _{eff})	44.5 A (%40)
Welding Current Range	60 - 650 A DC
Rated Welding Current	650 A DC (%40)
Maximum Open Circuit Voltage	20 V DC
Dimensions (l x w x h)	1152 x 645 x 1795 mm
Weight	235 kg
Protection Class	IP 21

Wire Feed System

Wire Diameter Range	1.00 - 2.80 mm
Standard Wire Rollers	1.20 / 1.60 mm
Roller Diameter	4 x 37 mm
Wire Feeding Speed	1 - 24 m/min.
Trigger Control	2 / 4
Spool Capacity	20 kg
Dimensions (l x w x h)	574 x 230 x 500 mm
Weight	27 kg

Cooling System

Cooling Capacity	14330 Btu (4.2 kW)
Rated Power	0.22 kVA
Rated Current	0.96 A
Dimensions (l x w x h)	770 x 490 x 280 mm
Weight	33,5 kg

Standard Accessories

Workpiece Clamp and Cable	7905509505 (95 mm ² - 5 m)
Gas Hose	790700002 (2 m)
MIG / MAG CO ₂ Accessory Set* (Torch + Heater + Regulator)	7920000550
MIG/MAG Mix/Argon Accessory Set* (Torch + Regulator)	7920000555

* Should be verified during ordering.

Optional Accessories

CO ₂ Heater (220V)	7020009002
Gas Regulator (CO ₂)	7020001005
Gas Regulator (Mix)	7020001004
Lava MIG 50W (3 m) Water Cooled MIG Torch	7021030600
Lava MIG 50W (4 m) Water Cooled MIG Torch	7021040600
Lava MIG 50W (5 m) Water Cooled MIG Torch	7021050600
Submerged Arc Welding Head	530T1001K0

Smart Step Controlled Industrial MIG/MAG Welding Machines

RS Pro Series

Step Transformer-Rectifier Technology
with Advanced Functions



Steels
Stainless Steels
Aluminium Alloys
Copper Alloys
Nickel Alloys



New
"Smart Mode"
Functions

- Operates with 3 Phase 400V-50/60 Hz mains voltage and generators, tolerates voltage fluctuations up to 15%.
- Excellent welding characteristics with all types of solid and flux cored wires with CO₂ or Mix gases.
- Intelligent control of temperature reduces energy consumption and extends the fan and machine life. (SmartFan)
- Sleep Mode to save energy if there is no activity in 7 minutes.
- Compact and Separate wire feeding units are standard. Closed Cabinet and Small-D200 (5Kg) Spool Wire Feeder.
- Powerful Digital Displays are closer to the welder.
- 4 roll drive system offers good feedability with long torches and offers less deformation on soft wires such as aluminum and flux cored wires.
- The Separate wire feeder standard harness length is 5 m and can be extended up to 30 m upon request.
- Optimum welding parameters can be obtained from the printed table inside of the wire feed cover.
- Wire feed speed adjustment, 2/4 trigger selection, Soft Start, Pre-Gas, Post-Gas, Burn-Back timer adjustments are through the red knob and membrane switch (M) on the wire feeding pedal. During welding, voltage and current are monitored on digital displays.
- Welding voltage is adjusted from the course and fine switches; increments are optimized to obtain welding parameters with lowest spatter levels.
- Manual wire feeding & gas valve buttons are in the wire feeding cabinet.
- Ø300 mm, Ø270 mm and Ø200 mm spools and drums of any size can be used.
- 24V AC outlet for CO₂ gas heater.
- Multiple workpiece connections (Inductance outlets) enables optimum parameter adjustment for low spatter welding.
- Built in gas cylinder platform with large wheels to ease mobility in workshops.
- Torch water cooling unit provides powerful cooling up to 40°C ambient temperature. (Water-cooled (W) models)
- Standard accessories come with the machine.

Compact Separate Wire Feeder Water Cooled	RS 350MK Pro RS 350M Pro RS 350MW Pro	RS 450M Pro RS 450MW Pro	RS 550M Pro RS 550MW Pro
Mains Voltage (3-phase)	400 V - 50/60 Hz	400 V - 50/60 Hz	400 V - 50/60 Hz
Rated Power	15.8 kVA (%40)	22.6 kVA (%50)	31.7 kVA (%50)
Rated Mains Current (I _{eff})	14.5 A (%40)	23.2 A (%50)	32.5 A (%50)
Welding Current Range	60 - 350 A DC	85 - 450 A DC	95 - 550 A DC
Rated Welding Current	350 A DC (%40)	450 A DC (%50)	550 A DC (%50)
Maximum Open Circuit Voltage	20 - 52 V DC	20 - 57 V DC	21 - 58 V DC
Voltage Adjustment and Number of Levels	3 x 7	3 x 10	3 x 10
Dimensions (l x w x h)	Compact	876 x 505 x 939 mm	-
	Separate Wire Feeder	1008 x 592 x 1220 mm	1008 x 592 x 1220 mm
	Water Cooled	1008 x 592 x 1443 mm	1008 x 592 x 1443 mm
Weight	Compact	123 kg	-
	Separate Wire Feeder	145,5 kg	225 kg
	Water Cooled	177 kg	256,5 kg
Protection Class	IP 21	IP 21	IP 21

Wire Feed System

Wire Diameter Range	0.60 - 1.20 mm	0.80 - 2.00 mm	0.80 - 2.40 mm
Standard Wire Rollers	1.00 / 1.20 mm	1.00 / 1.20 mm	1.00 / 1.20 mm
Roller Diameter	4 x 37 mm	4 x 37 mm	4 x 37 mm
Wire Feeding Speed	1 - 24 m/min.	1 - 24 m/min.	1 - 24 m/min.
Trigger Control	2 / 4	2 / 4	2 / 4
Spool Capacity	20 kg	20 kg	20 kg
Dimensions (l x w x h)	660 x 315 x 443 mm	660 x 315 x 443 mm	660 x 315 x 443 mm
Weight	21 kg	23,5 kg	26,5 kg

Cooling System

Cooling Capacity	2.11 kW	2.11 kW	2.11 kW
Rated Power	0.22 kVA	0.22 kVA	0.22 kVA
Rated Current	0.96 A	0.96 A	0.96 A
Dimensions (l x w x h)	770 x 490 x 280 mm	770 x 490 x 280 mm	770 x 490 x 280 mm
Weight	33,5 kg	33,5 kg	33,5 kg

Standard Accessories

Workpiece Clamp and Cable	Compact	7905203503 (35 mm ² - 3 m)	7905407003 (70 mm ² - 3 m)	7905407003 (70 mm ² - 3 m)
	Separate Wire Feeder	7905203505 (35 mm ² - 5 m)	7905407005 (70 mm ² - 5 m)	7905407005 (70 mm ² - 5 m)
Gas Hose		790700002 (2 m)	790700002 (2 m)	790700002 (2 m)
MIG / MAG CO ₂ Accessory Set* (Torch + Heater + Regulator)		7920000531/7920000551	7920000531/7920000551	7920000541/7920000551
MIG/MAG Mix/Argon Accessory Set* (Torch + Regulator)		7920000555	7920000555	7920000555

* Should be verified during ordering.

Optional Accessories

CO ₂ Heater (24V)	7020009003	7020009003	7020009003
Gas Regulator (CO ₂)	7020001005	7020001005	7020001005
Gas Regulator (Mix)	7020001004	7020001004	7020001004
Lava MIG 35 (3 m) Air Cooled MIG Torch	7021030350	7021030350	-
Lava MIG 35 (4 m) Air Cooled MIG Torch	7021040350	7021040350	-
Lava MIG 35 (5 m) Air Cooled MIG Torch	7021050350	7021050350	-
Lava MIG 40 (3 m) Air Cooled MIG Torch	7021030400	7021030400	7021030400
Lava MIG 40 (4 m) Air Cooled MIG Torch	7021040400	7021040400	7021040400
Lava MIG 40 (5 m) Air Cooled MIG Torch	7021050400	7021050400	7021050400
Lava MIG 50W (3 m) Water Cooled MIG Torch	7021030500	7021030500	7021030500
Lava MIG 50W (4 m) Water Cooled MIG Torch	7021040500	7021040500	7021040500
Lava MIG 50W (5 m) Water Cooled MIG Torch	7021050500	7021050500	7021050500



EN 60974-1

EN 60974 -10

RoHS

Classical Step Controlled Industrial MIG / MAG Welding Machines

RS Series

Step Transformer - Rectifier Technology



Steels
Stainless Steels
Aluminium Alloys
Copper Alloys
Nickel Alloys



- Operates with 3 Phase 400V-50/60 Hz mains voltage and generators, tolerates voltage fluctuations up to 15%.
- Excellent welding characteristics with all types of solid and flux cored wires with CO₂ or Mix gases.
- Compact and Separate wire feeding units are standard. Open Cabinet and Smaller Wire Feeding Units for 5 kg (D200) spools options are available.
- 4 roll drive system offers good feedability with long torches and offers less deformation on soft wires such as aluminum and flux cored wires.
- The Separate wire feeder standard harness length is 5 m and can be extended up to 30 m upon request.
- Optimum welding parameters can be obtained from the printed table inside of the wire feed cover.
- Wire feed speed and 2/4 trigger adjustments are on the front panel, **Soft Start, Pre-Gas, Post-Gas, Burn-Back** timer settings, manual wire feeding & gas valve buttons are inside of the wire feeding cabinet.
- Welding voltage is adjusted from the course and fine switches; increments are optimized to obtain welding parameters with lowest spatter levels.
- Digital displays on the power source for adjusting and monitoring of welding parameters.
- Multiple workpiece connections (Inductance outlets) enables optimum parameter adjustment for low spatter welding.
- Ø300 mm, Ø270 mm and Ø200 mm spools and drums of any size can be used.
- 220V AC outlet for CO₂ gas heater.
- Built in gas cylinder platform with large wheels to ease mobility in workshops.
- Fan cooling and thermal protection against overheating.
- Torch water cooling unit provides powerful cooling up to 40°C ambient temperature. (Water-cooled (W) models)
- Standard accessories come with the machine.

Compact Separate Wire Feeder Water Cooled	RS 250MK RS 250M	RS 300MK RS 300M	RS 400MK RS 400M RS 400MW	RS 500M RS 500MW	
Mains Voltage (3-phase)	400 V - 50/60 Hz	400 V - 50/60 Hz	400 V - 50/60 Hz	400 V - 50/60 Hz	
Rated Power	10 kVA (%40)	13.8 kVA (%40)	19.1 kVA (%50)	29.5 kVA (%40)	
Rated Mains Current (I _{eff})	9.2 A (%40)	12.6 A (%40)	19.9 A (%50)	26 A (%40)	
Welding Current Range	57 - 250 A DC	40 - 300 A DC	45 - 400 A DC	45 - 500 A DC	
Rated Welding Current	250 A DC (%40)	300 A DC (%40)	400 A DC (%50)	500 A DC (%40)	
Maximum Open Circuit Voltage	19.7 - 51 V DC	19 - 44 V DC	20 - 48 V DC	19 - 53 V DC	
Voltage Adjustment and Number of Levels	3 x 7	3 x 7	4 x 7	3 x 10	
Dimensions (l x w x h)	Compact	890 x 460 x 950 mm	890 x 460 x 950 mm	890 x 460 x 950 mm	
	Separate Wire Feeder	865 x 510 x 780 mm	865 x 510 x 780 mm	1020 x 590 x 1290mm	
	Water Cooled	-	-	1020 x 590 x 1515 mm	
Weight	Compact	105 kg	112 kg	121 kg	
	Separate Wire Feeder	101 kg	101 kg	134 kg	
	Water Cooled	-	-	155 kg	
Protection Class	IP 21	IP 21	IP 21	IP 21	
Wire Feed System					
Wire Diameter Range	0.60 - 1.00 mm	0.60 - 1.20 mm	0.80 - 1.60 mm	0.80 - 2.40 mm	
Standard Wire Rollers	0.80 / 1.00 mm	0.80 / 1.00 mm	1.00 / 1.20 mm	1.00 / 1.20 mm	
Roller Diameter	4 x 37 mm	4 x 37 mm	4 x 37 mm	4 x 37 mm	
Wire Feeding Speed	1 - 24 m/min.	1 - 24 m/min.	1 - 24 m/min.	1 - 24 m/min.	
Trigger Control	2 / 4	2 / 4	2 / 4	2 / 4	
Spool Capacity	20 kg	20 kg	20 kg	20 kg	
Dimensions (l x w x h)	560 x 225 x 450 mm	560 x 225 x 450 mm	560 x 225 x 450 mm	560 x 225 x 450 mm	
Weight	23 kg	23 kg	25 kg	25 kg	
Cooling System					
Cooling Capacity	-	-	2.11 kW	2.11 kW	
Rated Power	-	-	0.22 kVA	0.22 kVA	
Rated Current	-	-	0.96 A	0.96 A	
Dimensions (l x w x h)	-	-	770 x 490 x 280 mm	770 x 490 x 280 mm	
Weight	-	-	33,5 kg	33,5 kg	
Standard Accessories					
Workpiece Clamp and Cable	Compact	7905212503 (25 mm ² - 3 m)	7905212503 (25 mm ² - 3 m)	7905203503 (35 mm ² - 3 m)	7905407003 (70 mm ² - 3 m)
	Separate Wire Feeder	7905212505 (25 mm ² - 5 m)	7905212505 (25 mm ² - 5 m)	7905203505 (35 mm ² - 5 m)	7905407005 (70 mm ² - 5 m)
Gas Hose		790700002 (2 m)	790700002 (2 m)	790700002 (2 m)	790700002 (2 m)
MIG / MAG CO ₂ Accessory Set* (Torch + Heater + Regulator)		7920000520	7920000520	7920000530 / 7920000550	7920000530 / 7920000550
MIG/MAG Mix/Argon Accessory Set* (Torch + Regulator)		7920000525	7920000525	7920000535 / 7920000555	7920000535 / 7920000555
* Should be verified during ordering.					
Optional Accessories					
CO ₂ Heater (220V)		7020009002	7020009002	7020009002	7020009002
Gas Regulator (CO ₂)				7020001005	
Gas Regulator (Mix)				7020001004	
Lava MIG 25 (3 m) Air Cooled MIG Torch		7021030200	-	-	-
Lava MIG 25 (4 m) Air Cooled MIG Torch		7021040200	-	-	-
Lava MIG 25 (5 m) Air Cooled MIG Torch		7021050200	-	-	-
Lava MIG 35 (3 m) Air Cooled MIG Torch		-	7021030350	7021030350	-
Lava MIG 35 (4 m) Air Cooled MIG Torch		-	7021040350	7021040350	-
Lava MIG 35 (5 m) Air Cooled MIG Torch		-	7021050350	7021050350	-
Lava MIG 40 (3 m) Air Cooled MIG Torch		-	-	7021030400	7021030400
Lava MIG 40 (4 m) Air Cooled MIG Torch		-	-	7021040400	7021040400
Lava MIG 40 (5 m) Air Cooled MIG Torch		-	-	7021050400	7021050400
Lava MIG 50W (3 m) Water Cooled MIG Torch		-	-	7021030500	7021030500
Lava MIG 50W (4 m) Water Cooled MIG Torch		-	-	7021040500	7021040500
Lava MIG 50W (5 m) Water Cooled MIG Torch		-	-	7021050500	7021050500



EN 60974-1

EN 60974 -10

RoHS

Product Codes



	Compact	Separate Wire Feeding Unit (5 m)	Separate Wire Feeding Unit (10 m)	Separate Wire Feeding Unit (15 m)	Separate Wire Feeding Unit (20 m)	Wire Feeding Unit Type
monoMAG 180	521K1500M0	-	-	-	-	-
monoMIG 200	521K2000M0	-	-	-	-	-
RS 200	522020AK00	522020A110	522020A120	522020A130	522020A140	Compact
RS 250	522025AK00	522025A110	522025A120	522025A130	522025A140	Compact
RS 300	522030AK00	522030A110	522030A120	522030A130	522030A140	Compact
RS 350 Pro	522P35AK00	522P35A210	522P35A220	522P35A230	522P35A240	Open
RS 350 Pro Water Cooled	522P35WK00	522P35W210	522P35W220	522P35W230	522P35W240	Open
RS 400	522040AK00	522040A110	522040A120	522040A130	522040A140	Compact
RS 400 Water Cooled	-	522040W110	522040W120	522040W130	522040W140	Compact
RS 450 Pro	-	522P45A210	522P45A220	522P45A230	522P45A240	Open
RS 450 Pro Water Cooled	-	522P45W210	522P45W220	522P45W230	522P45W240	Open
RS 500	-	522050A110	522050A120	522050A130	522050A140	Compact
RS 500 Water Cooled	-	522050W110	522050W120	522050W130	522050W140	Compact
RS 550 Pro	-	522P55A210	522P55A220	522P55A230	522P55A240	Open
RS 550 Pro Water Cooled	-	522P55W210	522P55W220	522P55W230	522P55W240	Open
RD 650 Water Cooled	-	522T50W110	522T50W120	522T50W130	522T50W140	Compact
ID 300	523030AK00	523030A210	523030A220	523030A230	523030A240	Open
ID 300 Pulse	523P30AK00	523P30A210	523P30A220	523P30A230	523P30A240	Open
ID 300 Water Cooled	523030WK00	523030W210	523030W220	523030W230	523030W240	Open
ID 300 Pulse Water Cooled	523P30WK00	523P30W210	523P30W220	523P30W230	523P30W240	Open
ID 400	-	523040A210	523040A220	523040A230	523040A240	Open
ID 400 Pulse	-	523P40A210	523P40A220	523P40A230	523P40A240	Open
ID 400 Water Cooled	-	523040W210	523040W220	523040W230	523040W240	Open
ID 400 Water Cooled	-	523P40W210	523P40W220	523P40W230	523P40W240	Open
ID 500	-	523050A210	523050A220	523050A230	523050A240	Open
ID 500 Pulse	-	523P50A210	523P50A220	523P50A230	523P50A240	Open
ID 500 Water Cooled	-	523050W210	523050W220	523050W230	523050W240	Open
ID 500 Water Cooled	-	523P50W210	523P50W220	523P50W230	523P50W240	Open

* Please contact for optional wire feeder requests.

MIG/MAG Torches and Consumables

50W Control Options		100 - 200 A		250 - 400 A		500 A		
7920000302								
7920000304								
		Lava MIG 15	Lava MIG 25	Lava MIG 35	Lava MIG 40	Lava MIG 50W	Lava MIG 50WR	
Welding Capacity	CO ₂	150 A (%60)	230 A (%60)	320 A (%60)	400 A (%60)	500 A (%100)	500 A (%100)	
Order Codes	3 m	7021030150	7021030200	7021030350	7021030400	7021030500	7021230500	
	4 m	7021040150	7021040200	7021040350	7021040400	7021040500	7021240500	
	5 m	7021050150	7021050200	7021050350	7021050400	7021050500	7021250500	
Cooling Type		Air	Water	Air	Air	Water	Water	
Consumables								
Nozzle		12 mm	7022001253	7022011253	-	-	-	
		15 mm	-	7022001554	-	7022101575	-	
		16 mm	-	-	7022001684	-	7022001675	
Contact Nozzle		Standard	0.60 mm	7023062506 (M6xL25)	7023062806 (M6xL28)		-	
			0.80 mm	7023062508 (M6xL25)	7023062808 (M6xL28)		7023083008 (M8xL30)	
			1.00 mm	7023062510 (M6xL25)	7023062810 (M6xL28) / 7023262810 (M6xL28xCuCrZr)		7023083010 (M8xL30) / 7023283010 (M8xL30xCuCrZr)	
			1.20 mm	7023062512 (M6xL25)	7023062812 (M6xL28) / 7023262812 (M6xL28xCuCrZr)		7023083012 (M8xL30) / 7023283012 (M8xL30xCuCrZr)	
			1.40 mm	-	-	-	7023083014 (M8xL30)	
		Aluminum	1.60 mm	-	7023062816 (M6xL28)		7023083016 (M8xL30) / 7023283016 (M8xL30xCuCrZr)	
			2.00 mm	-	-	-	7023083520 (M8xL30) / 7023283020 (M8xL30xCuCrZr)	
			2.40 mm	-	-	-	7023083524 (M10xL30) / 7023213524 (M10xL30xCuCrZr)	
			1.00 mm	-	7023162810 (M6xL28)		7023183010 (M8xL30)	
			1.20 mm	-	7023162812 (M6xL28)		7023183012 (M8xL30)	
KTM Holder		M6	7026000156	7026000256	7026000356	-	-	
		M8	-	-	7026000358	7026000408	7026000508	
Gas Distributor		Ceramic	-	7024100024	7024100035	7024100050	7024100050	
		Copper	-	7026000246	-	-	-	
Steel Spiral		0.60 mm	3 m					7025030609
			4 m					-
			5 m					7025050810
		1.00 mm	3 m					7025031012
			4 m					7025041012
			5 m					7025051012
		1.20 mm	3 m					7025031012
			4 m					7025041216
			5 m					7025051216
		1.60 mm	3 m					7025031624
2.40 mm					-			
Teflon Spiral		1.00 mm	3 m					7025530610
		1.20 mm	3 m					7025531012
		1.60 mm	3 m					7025531216
Wire Feed Rollers*		0.6-0.8 mm					7027000608	
		0.8-1.0 mm					7027000810	
		1.0-1.2 mm					7027001012	
		1.2-1.6 mm					7027001216	
		0.8-1.0 mm AL					7027010810	
		1.0-1.2 mm AL					7027011012	
		1.2-1.6 mm AL					702701216	
1.2-1.6 mm Cored Wire					7027021216			

* Used in Magmaweld machines in 2012 models and later. Please contact for previous production and Lorch machinery.

Welding Fume Extraction and Filtration Systems (FSFS)

DFS 1M, DFS 2M
DFS 1MK, DFS 2MK

Mobile Models



Single Hood Model
DFS 1M

Double Hood Model
DFS 2M

- Operates at 3-Phase 380 V - 50/60 Hz.
- F8 Filter holds 99 % of the welding fume.
- Aluminum mesh for spark damping.
- Filter change warning.
- Reverse phase warning.
- 5 m supply cable.
- Optional 2 m, 3 m and 4 m Moving Hood selection.
- Work area illumination. (Optional)
- Carbon Filter for special applications. (for MK Models)



DFS -1M DFS-2M DFS-1MK DFS-2MK

	DFS-1M DFS-1MK	DFS-2M DFS-2MK
Supply Voltage	380 V - 50 / 60 Hz	380 V - 50 / 60 Hz
Filtering Efficiency	> 99%	> 99%
Motor Power	1,1 kW / 1,5 kW (K Model)	1,5 kW
Suction Capacity	3000 m³ / h	2800 m³ / h
Suction Capacity (For K Models)	2800 m³ / h	2600 m³ / h
Noise Level	72 dB (A)	72 dB (A)
Dimensions (l x w x h)	650 x 750 x 1050 mm	650 x 750 x 1050 mm
Dimensions (for K Models) (l x w x h)	650 x 750 x 1200 mm	650 x 750 x 1200 mm
Weight	96 kg	108 kg
Weight (for K Models)	115 kg	115 kg
Product Code	8415100M15	8415200M15
Product Code (For K Models)	8415110M15	8415210M15

Consumables and Optional Accessories		
Carbon Filter (For K Models)	8490000200	8490000200
Tray Type Filter	8490000603	8490000603
Front Fiber Filter	8490000301	8490000301
Lighting (Optional)	8490000305	8490000305
Moving Hood (2 m)	8420000102	-
Moving Hood (3 m)	8420000103	-
Moving Hood (4 m)	8420000104	-
Moving Hood with Flap (2 m)	-	8420000202
Moving Hood with Flap (3 m)	-	8420000203
Moving Hood with Flap (4 m)	-	8420000204

* Main unit and movable handle are ordered separately for Mobile and Fixed FSFS products. Optional handle should be selected according to the base unit from the above table and should be added to the order.

Welding Fume Extraction and Filtration Systems (FSFS)

DFS-1S, DFS-2S
DFS-1SK, DFS-2SK

Wall Mount Models



Single Hood Model
DFS-1S

Double Hood Model
DFS-2S

- Operates at 3-Phase 380 V - 50/60 Hz.
- F8 Filter holds 99 % of the welding fume.
- Aluminum mesh for spark damping.
- Filter change warning.
- Reverse phase warning.
- 5 m supply cable.
- Optional 2 m, 3 m and 4 m Moving Hood selection.
- Work area illumination. (Optional)
- Carbon Filter for special applications. (for SK models)



Control Unit

DFS-1S

DFS-2S

DFS-1SK

DFS-2SK

	DFS-1S DFS-1SK	DFS-2S DFS-2SK
Supply Voltage	380 V - 50 / 60 Hz	380 V - 50 / 60 Hz
Filtering Efficiency	> 99%	> 99%
Motor Power	1,1 kW / 1,5 kW (K Model)	1,5 kW
Suction Capacity	3000 m ³ / h	2800 m ³ / h
Suction Capacity (For K Models)	2800 m ³ / h	2600 m ³ / h
Noise Level	72 dB (A)	72 dB (A)
Dimensions (l x w x h)	655 x 755 x 935 mm	655 x 755 x 935 mm
Dimensions (for K Models) (l x w x h)	655 x 755 x 1085 mm	655 x 755 x 1085 mm
Weight	90 kg	90 kg
Weight (for K Models)	110 kg	110 kg
Product Code	8416100M15	8416200M15
Product Code (For K Models)	8416110M15	8416210M15

Consumables and Optional Accessories		
Carbon Filter (For K Models)	8490000200	8490000200
Tray Type Filter	8490000603	8490000603
Front Fiber Filter	8490000301	8490000301
Lighting (Optional)	8490000305	8490000305
Moving Hood (2 m)	8420000302	-
Moving Hood (3 m)	8420000303	-
Moving Hood (4 m)	8420000304	-
Moving Hood with Flap (2 m)	-	8420000402
Moving Hood with Flap (3 m)	-	8420000403
Moving Hood with Flap (4 m)	-	8420000404

* Main unit and movable handle are ordered separately for Mobile and Fixed FSFS products. Optional handle should be selected according to the base unit from the above table and should be added to the order.

Welding Fume Extraction and Filtration Systems (FSFS)

DES-MS

Mobile Fume Extraction Unit



DES-SS

Wall Mount Fume Extraction Unit



- Operates at 3-Phase 380 V - 50/60 Hz.
- **Mobile Fume Extraction Units** are for narrow and confined spaces. Standart hose is 5 m, extendable to 20 m and suction nozzle with a magnet enables easy positioning.
- **Wall Mount Fume Extraction Units** are for exhausting fumes from multi work benches to central filter station. Moving Hood can be chosen as **2 m, 3 m and 4 m**.
- Hood light for work area illumination. (DES-SS / Optional)

	DES-MS	DES-SS
Supply Voltage	380 V - 50 / 60 Hz	380 V - 50 / 60 Hz
Motor Power	1,1 kW	1,1 kW
Suction Capacity	3000 m ³ / h	3000 m ³ / h
Noise Level	69 dB (A)	69 dB (A)
Dimensions (l x w x h)	650 x 500 x 250 mm	650 x 500 x 250 mm
Weight	40 kg	37 kg
Product Code	8414011M15	8417000M15 / 8417015M15

Optional Accessories

Flex Hose 5 m	8420001106
Flex Hose (Magnet) 5 m	8420001105
Flex Hose 10 m	8420001110
Flex Hose 15 m	8420001115
Moving Hood with Flap (2 m)	8420000502
Moving Hood with Flap (3 m)	8420000503
Moving Hood with Flap (4 m)	8420000504

*Flex Hose (Magnet) 5 m Optional hood is sold separately in Mobile Spiral Units (DES-MS) and should be added to the order.



Kaiyuan Industrial Submerged Arc Welding Machines

MZ-1000BF
MZ-1000BB



Steels
Stainless Steels
Copper Alloys

Thyristor Technology for Heavy Industries



Tractor MZC-1250F19

Power Supply ZD5-1000

Welding Head MZ9-1250B11*

- Designed to be used 24 hours a day, 7 days a week under heavy working conditions such as steel construction sites, shipyards, pressure tube, longitudinal or spiral pipe manufacturing.
- Tractor or Welding Head models.
- Stable welding current without loss of performance due to electric line fluctuations, ambient temperature changes or long welding and electrical cables.
- Welding Voltage, Wire Feed Speed, Tractor Speed are controlled and monitored through digital displays on the control box. Optionaly positioners, rollers, linear benches can be controlled and monitored as well.
- Crater current, crater voltage, flashback time adjustments.
- Tractor supports wire spools up to 435 mm diameter and 25 kg weight and 8 Lt flux hopper.
- In addition to Subarc Welding (SAW) process, Electroslag Welding (ESW) Carbon Gauging (CAC), Stick Electrode Welding (SMAW) processes can also be performed.
- The power supply is fan-cooled and has thermal protection against overheating.
- Flux recovery unit is optional.
- Standard accessories come with the machine.

Power Source	ZD5-1000
Mains Voltage (3-phase)	380 V / 50 Hz
Rated Power	68 kVA
Recommended Mains Fuse	125 A
Open Circuit Voltage	71 V
Welding Current Range	200 - 1000 A
Operating Cycle	%100
Dimensions (l x w x h)	980 x 670 x 1000 mm
Weight	480 kg
Protection Class	IP 21
Product Code	502S100DK0

Tractor / Welding Head	MZC-1250F19	MZ9-1250B11
Dimensions (l x w x h)	900 x 520 x 850 mm	-
Weight	68 kg	45 kg
Wire Diameter	3.20 - 4.00 - 4.80 mm	3.20 - 4.00 - 4.80 mm
Welding Speed	15 - 125 cm/min.	-
Wire Feed Speed	33 - 330 cm/min.	27 - 270 cm/min.
Welding Head Adjustment Range	100 x 120 (Lengthwise x Widthwise)	150 x 150 (Lengthwise x Widthwise)
Rotation Angle Between Welding Head & Tractor	360°	360°
Welding Head Rotation Angle (Right - Left)	45°	45°
Welding Head Rotation Angle (Forward - Backward)	45°	45°
Flux Capacity	8 lt	8 lt
Wire Bearing Capacity	25 kg	25 kg
Standard Rail Length	1.80 m (2 pieces)	-
Protection Class	IP 21	IP 21
Product Code	530T1001K0	530T10002K0

Standart Accessories	
Welding Cable (70 mm ² x 15 m) 2 pieces	K301400615
Workpiece Cable (70 mm ² x 5 m) 2 pieces	K301500605
Communication Cable (15 m) 1 piece	Y533000013
Rail (1.8 m) 2 pieces	7930002001

Optional Accessories	
Flux Recovery Unit - (Compressor Connection)	7930001002
Rail (1.8 m)	7930002001
Carbon Gauging Clamp	7908201000

Consumables	
Nozzle	7022001000
Contact Tip Holder	Y532000074
Contact Tip (2.40 mm)	7023000024
Contact Tip (3.20 mm)	7023000032
Contact Tip (4.00 mm)	7023000040
Contact Tip (5.00 mm)	7023000050
Torch Head	Y532000003
Flow Pipe	Y532000008
Flux Recovery Unit Filter Ø 180 x 500 Double Layer)	A257100003



Rail



Carbon Gouging Clamp

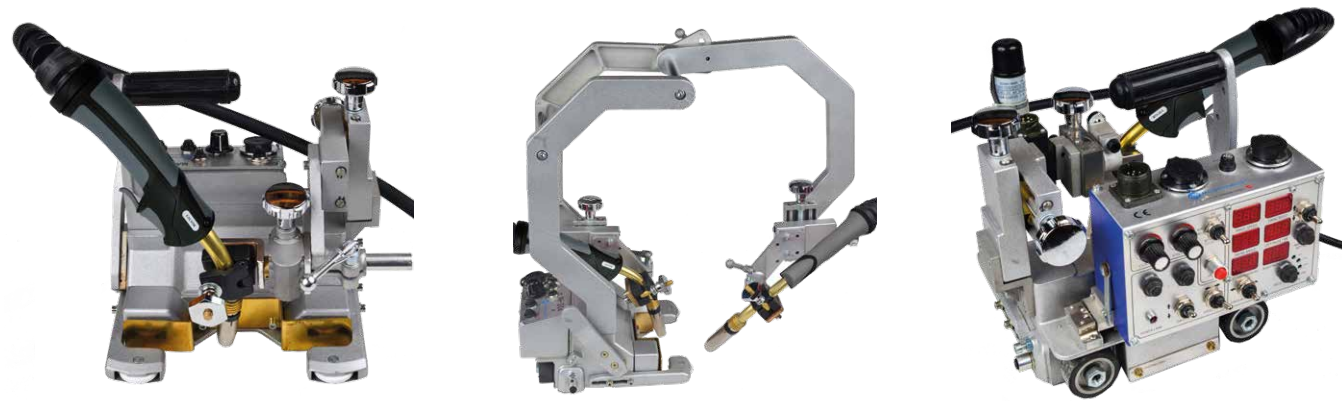
Welding and Cutting Machines

HK6 I Single Torch

HK6 II Double Torch

HK6 W Oscillation

MIG / MAG Welding Tractors



- Welding tractor for mainly fillet weldings such as Dutch profiles in shipbuilding.
- Twin torch attachment for welding both sides of the "I" profile at the same time.
- Portable but sturdy structure with well balanced center of gravity against tipping over, easy installation and provides smooth travelling.
- Travels also vertical up with the help of the powerful magnet under the tractor.
- Automatic stop function stops the tractor at any desired place.
- 42V operating voltage for operational safety.
- Communicates with any MIG/MAG welding machine and any MIG/MAG hand torch can be installed.

HK6 W Oscillation model:

- Advanced digital control box.
- The oscillation angle and frequency are adjusted separately
- Intermittent welding function

Technical Specifications	HK6 I Single Torch	HK6 II Double Torch	HK6 W Oscillation
Operating voltage	42 V / 50Hz	42 V / 50Hz	42 V / 50Hz
Horizontal Torch Angle	40° - 55°	40° - 55°	45° - 55°
Up/Down Setting	45 mm	45 mm	40 mm
Front/Rear Adjustment	45 mm	45 mm	40 mm
Traction Force	16 kg	30 kg	-
Tractor Speed	150 - 1500 mm/min.	100 - 1500 mm/min.	50 - 1900 mm/min.
Monitoring System	Guide Wheel	Guide Wheel	Guide Wheel
Drive System	Four-Wheel Drive	Four-Wheel Drive	Four-Wheel Drive
Standard Tracking Height	45 mm	45 mm	45 mm
Dimensions (l x w x h)	260 x 260 x 264 mm	500 x 280 x 520 mm	430 x 280 x 290 mm
Weight (Aba Body)	6.9 kg	12.6 kg	12 kg
Product Code	560M0000M0	560M0010M0	560M0001M0
Oscillation Right/Left Timing	-	-	0 - 2,5 sn.
Oscillation Deviation	-	-	0 - ±8°
Oscillation Speed	-	-	0 - 100°
Oscillation Angle	-	-	±15°
Oscillation Modes	-	-	

Standard Accessories

Step Down Transformer	220-42 V	220-42 V	220-42 V
Twin Torch Parts	-	7960000001	-

Optional Accessories

Twin Torch Parts	7960000001	-	-
------------------	------------	---	---

Welding and Cutting Machines

HK12 Max 3

Oxygen and Plasma Cutting Tractor



- Automatic welding and cutting with MIG/MAG or OXY-FUEL or PLASMA torches.
- Unique guiding system and special cutting nozzles provides clean and precise cuttings.
- For Straight lines 2 x 1.8 m long rails are standard; they can be joined one after the other infinitely.
- Adjustable circular rail option for circular cutting.
- "X" welding edge can be opened with special torches and cutting is performed up to 600 mm. thickness.
- Suitable for linear, circular welding and for grooving welding ends. (With optional circular rail)
- Double conical reduction gear system for speed adjustments.
- Directions: Forward - Stop - Reverse, clutch lever and speed control knob.
- Robust and lightweight structure due to its reinforced aluminum body.
- Allows working under high temperature conditions.
- Fan cooling and thermal protection against overheating.

Technical Specifications	HK12 Max 3
Operating voltage	220V / 50Hz
Cutting Thickness S-Type	40 - 45 mm (Standard)
Cutting Speed	80 - 800 mm/min. (50 Hz)
Weight	30 kg
Tractor Speed	100-1500 mm/min.
Product Code	560R0000M0

Standard Accessories

Straight Cutting Rail (1.8 m)	7960000002
Plasma Cutting Torch Connection Set	7960000003
Welding Torch Connection Set	7960000004

magNET

Tracking of all welding parameters;

- Arc-on Time
- Wire deposition (Speed and Amount)
- Welding current and voltage
- Wire speed and consumption
- Gas flow rate
- Gas consumption saving
- Welding speed (Linear, Rotation or Robot Arm)
- Energy consumption

» Data Collection and Processing from any brand/model welding machine

» Application experience in many sectors from steel construction, general fabrication to automotive

» Easy installation

» WPS compliance report and graphics

» EN1090 Archive and WPS Development Tools

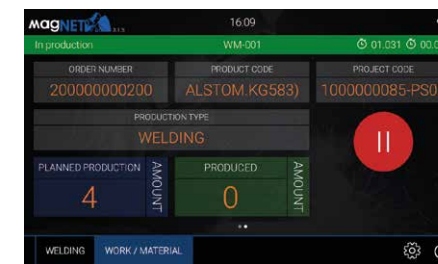


From the magNET operator screen;

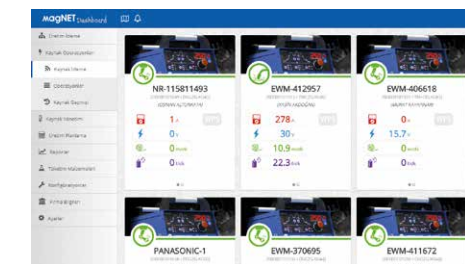
- Welder identification
- Error entry
- Downtime inputs
- Work order number or WPS number entries
- Gas or welding wire type input

On the computer;

- User-friendly Interface
- Detailed reporting for all collected data
- Machine and welder performance monitoring
- Integration with Magmaweld WPS / WPQR packages
- Web-based software
- Application of critical parameters with limits and alarms



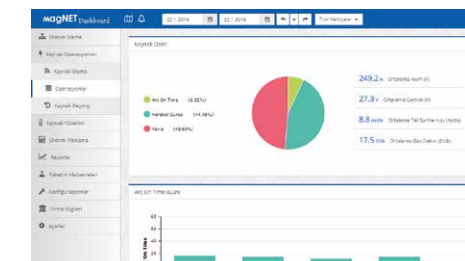
Workorder Details



User Friendly Interface



Gas or Welding Wire Input



Detailed Reporting for All Collected Data

Non-Stop Welding Since 1957

Magmaweld is a developer & manufacturer of Stick Electrodes, MIG/MAG & TIG Wires, Flux Cored Wires, Submerged-Arc Wires and Fluxes, Welding Machines, Fume Extractors, Welding Ancillary Products and Robotic Automation Systems since 1957 in Turkey. 95% of its sales program is manufactured by the two factories in Manisa/Turkey.



(+90) 444 93 53
magmaweld.com
info@magmaweld.com